

**PIPELINES AND POLITICS
(APPENDICES)**

Alison Gocke

Appendix A: Major Natural Gas Pipeline Projects Approved by FERC under the 1999 Policy Statement

The following table includes all major natural gas pipeline projects approved by the Federal Energy Regulatory Commission (“FERC”) under its 1999 Policy Statement, dating from 2000 to 2021. The project list was assembled from data posted on the FERC website,¹ and then narrowed down to include only those projects approved under FERC’s 1999 Policy Statement. The table also includes information related to the greenhouse gas emissions and environmental justice impacts of each project based on documents pulled from the FERC docket for each project, including available environmental assessments (“EAs”) or environmental impact statements (“EISs”) produced pursuant to the National Environmental Policy Act (“NEPA”). Projects that are highlighted in red have been canceled; projects that are highlighted in orange have been partially canceled (i.e., the developer abandoned some substantial part of the project that was initially approved by FERC).

Docket No.	Certificate Decision(s)	Company/Project	Miles of Pipe	States	Issued Date	EJ Community? (Yes, No, No Analysis, Unclear, No EA, Can't Access EA) ²	GHG Emissions (Downstream, No Downstream, No Analysis, No EA, Can't Access EA) ³
CP99-241	90 FERC 61,171	Tennessee Gas Pipeline Company	3	IL, WI	2/23/2000	No Analysis	No Analysis

¹ *Approved Major Pipeline Projects (1997-Present)*, FERC, <https://perma.cc/XE5C-6A9X>.

² This column tracks whether the project was sited in a low-income and/or minority community (known as an “environmental justice” (“EJ”) community). “Yes” means the project was sited in such a community; “No” means it was not; “No Analysis” means FERC either did not conduct an environmental justice analysis for the project at all or it concluded that the project had no environmental justice implications without including any information on whether environmental justice communities were present in the project area; “Unclear” means that FERC performed some analysis of the communities in the project area but it was not clear based on this analysis whether these communities satisfied the criteria for environmental justice communities; “No EA” means that FERC did not complete an environmental assessment for the project; and “Can’t Access EA” means that FERC (or another governmental agency) did complete an environmental assessment for the project but it is not accessible on the FERC docket.

³ This column tracks whether FERC calculated the greenhouse gas (“GHG”) emissions associated with the project. “Downstream” means that FERC calculated the greenhouse gas emissions associated with the downstream combustion of the gas proposed to be transported by the project; “No downstream” means that FERC did not calculate the downstream greenhouse gas emissions from the project, but it did calculate some set of other direct emissions, e.g., from the construction or operation of the project; “Better than alternative” means that FERC stated generally that the project’s greenhouse gas emissions from natural gas were better than alternative emissions from more carbon-dense fuels, e.g., coal, but did not calculate the project’s greenhouse gas emissions; “No Analysis” means that FERC did not calculate any greenhouse gas emissions associated with the project; “No EA” means that FERC did not complete an environmental assessment for the project; and “Can’t Access EA” means that FERC (or another governmental agency) did complete an environmental assessment for the project but it is not accessible on the FERC docket.

CP99-21	90 FERC 61,263; 92 FERC 61,243	Trans-Union Interstate Pipeline, L.P.	34.4	IA, IL, IN	3/16/2000	Can't Access EA	Can't access EA
CP99-624	91 FERC 61,006	Transcontinental Gas Pipe Line Corporation (Southcoast Expansion)	5.6	CO, WY	4/3/2000	Can't Access EA	Can't access EA
CP99-392	91 FERC 61,180	Wyoming Interstate Company, Ltd. (Medicine Bow Lateral Expansion)	44.3	AL, GA	5/22/2000	Can't Access EA	Can't access EA
CP99-163	92 FERC 61,110; 163 FERC 62,086	Northern Border Pipeline Company (Project 2000)	751	AZ, CA, NM, UT	7/28/2000	Yes	Better than alternative
CP00-47	92 FERC 61,066; 93 FERC 61,115	Florida Gas Transmission Company (Phase IV Expansion)	41.7	AR, LA	7/26/2000	No Analysis	Better than alternative
CP00-36	94 FERC 61,269; 91 FERC 61,285	Guardian Pipeline, L.L.C.	149	IL, WI	3/14/2001	Can't Access EA	Can't access EA
CP00-233	94 FERC 61,297; 95 FERC 61,220; 96 FERC 61,179	Southern Natural Gas Company (Southern System Expansion)	67	AL, GA, MS, SC	3/15/2001	Can't Access EA	Can't access EA
CP00-452	94 FERC 61,382	Colorado Interstate Gas Company	69	CO, OK, KS	3/29/2001	Can't Access EA	Can't access EA
CP00-165	94 FERC 61,380; 92 FERC 61,285; 95 FERC 61,426	Transcontinental Gas Pipe Line Corporation (Sundance Expansion)	38	AL, GA, MS, NC	3/29/2001	Can't Access EA	Can't access EA
CP01-106	95 FERC 61,022; 97 FERC 61,083	Kern River Gas Transmission Company (California Action Project)	0	WY, UT, NV, CA	4/6/2001	Can't Access EA	Can't access EA
CP00-422	95 FERC 61,176	El Paso Natural Gas Company (Line No. 2000 Project)	785	TX, NM, AZ	5/7/2001	Can't Access EA	Can't access EA
CP01-64	95 FERC 61,258	Trailblazer Pipeline Company	0	CO, NE	5/18/2001	Can't Access EA	Can't access EA
CP01-1	95 FERC 61,221	Colorado Interstate Gas Company	53.2	CO, KS	5/16/2001	Can't Access EA	Can't access EA
CP00-471	95 FERC 61,246	Wyoming Interstate Company (Medicine Bow Lateral Expansion)	155	WY, CO	5/17/2001	No Analysis	No Analysis
CP00-68	95 FERC 61,404; 93 FERC 61,279	Questar Pipeline Company (Mainline 104 Project)	75.6	UT	6/14/2001	Can't Access EA	Can't access EA

CP01-115	96 FERC 61,078	Transwestern Pipeline Company	0	AZ	7/14/2001	Can't Access EA	Can't access EA
CP00-129	96 FERC 61,053; 92 FERC 61,205	Horizon Pipeline Company	28.5	IL	7/12/2001	Can't Access EA	Can't access EA
CP01-154	96 FERC 61,077	Maritimes & Northeast Pipeline, L.L.C.	0	ME	7/13/2001	Can't Access EA	Can't access EA
CP01-141	96 FERC 61,194; 97 FERC 61,101	PG&E Gas Transmission-Northwest Corp.	21	WA	8/6/2001	No Analysis	Better than alternative
CP01-31	96 FERC 61,137; 97 FERC 61,080	Kern River Gas Transmission Company (Amended 2002 Expansion Project)	0	UT, CA, WY	7/26/2001	Can't Access EA	Can't access EA
CP00-40	96 FERC 61,151; 93 FERC 61,203; 98 FERC 61,179; 99 FERC 61,314	Florida Gas Transmission Company (Phase V Expansion)	231.1	AL, MS, FL	7/27/2001	Yes	Downstream
CP01-80	97 FERC 61,032	East Tennessee Natural Gas Company (Murray Lateral)	27	TN, GA	10/11/2001	Can't Access EA	Can't access EA
CP01-69	97 FERC 61,097	Petal Gas Storage, L.L.C.	59	MS	10/25/2001	Can't Access EA	Can't access EA
CP01-389	97 FERC 61,094; 98 FERC 61,086	Transcontinental Gas Pipe Line Corp. (Leidy East Project)	30.6	PA, NJ	10/25/2001	Can't Access EA	Can't access EA
CP01-360	97 FERC 61,201	Tennessee Gas Pipeline Company (Dracut Expansion)	11.9	MA	11/20/2001	Can't Access EA	Can't access EA
CP01-4	97 FERC 61,345; 95 FERC 61,077; 99 FERC 61,277	Maritimes & Northeast Pipeline, L.L.C. (Phase III Project); Algonquin Gas Transmission Company HubLine Project	25; 29.4	MA	12/21/2001	Unclear	Better than alternative
CP01-375	97 FERC 61,361	East Tennessee Natural Gas Company (TVA Project)	26.5	TN	12/21/2001	Can't Access EA	Can't access EA
CP00-232	97 FERC 61,379; 95 FERC 61,335; 98 FERC 61,273	Iroquois Gas Transmission (Eastchester Extension)	32.8	NY	12/26/2001	Unclear	No Analysis
CP01-22	98 FERC 61,020; 95 FERC 61,259; 99 FERC 61,028	North Baja Pipeline, LLC	79.8	AZ, CA	1/16/2002	Yes (draft EIS)	Better than alternative (draft EIS)

CP01-45	98 FERC 61,070; 96 FERC 61,176; 99 FERC 61,202	Colorado Interstate Gas Company	119.1	CO	1/30/2002	No Analysis	Better than alternative
CP01-153	98 FERC 61,071; 96 FERC 61,356; 99 FERC 61,044	Tuscarora Gas Transmission Company	14.2	CA, NV	1/30/2002	Can't Access EA	Can't Access EA
CP01-388	98 FERC 61,155	Transcontinental Gas Pipe Line Corporation (Momentum Expansion Project)	50	AL, GA, MS, NC	2/14/2002	Can't Access EA	Can't access EA
CP01-405	99 FERC 61,085	Kern River Gas Transmission Company (High Desert Lateral Project)	31.6	CA	4/24/2002	Can't Access EA	Can't access EA
CP01-361	99 FERC 61,083; 97 FERC 61,163; 100 FERC 61,176	Northwest Pipeline Corporation (Gray's Harbor Lateral Project)	48.9	WA	4/24/2002	Can't Access EA	Can't access EA
CP01-439	99 FERC 61,190; 100 FERC 61,240; 101 FERC 61,378	Columbia Gas Transmission Corporation Delaware Valley Energy Expansion Project	9.6	NJ, PA	5/17/2002	No Analysis	Better than alternative
CP02-20	99 FERC 61,261	Iroquois Gas Transmission	0	NY	6/3/2002	Can't Access EA	Can't access EA
CP02-45	99 FERC 61,308; 101 FERC 61,056	Texas Eastern Transmission, LP Hanging Rock Lateral Project	9.6	OH	6/12/2002	No Analysis	No Analysis
CP02-4	99 FERC 61,365; 98 FERC 61,352; 103 FERC 61,149	Northwest Pipeline Corporation (Evergreen Expansion Project)	27.8	WA	6/27/2002	Can't Access EA	Can't access EA
CP02-44	99 FERC 61,367; 101 FERC 61,047	National Fuel Gas Supply/Dominion Transmission/Tennessee Gas Pipeline Company (2002 Ellisburg-Leidy Joint Facilities Expansion/Can-East Project)	0	PA	6/28/2002	No EA	No EA
CP01-422	100 FERC 61,056; 98 FERC 61,205	Kern River Gas Transmission Company (Pre PF)	716.7	WY, UT, NV, CA	7/17/2002	Unclear	Downstream
CP02-57	100 FERC 61,284; 99 FERC 61,345	SCG Pipeline, Inc.	18.1	GA, SC	9/20/2002	Unclear	Can't access EA

CP02-1	100 FERC 61,281; 102 FERC 61,134; 102 FERC 61,247	Southern Natural Gas Company South System Expansion Project	114.2	AL, GA, LA, MS	9/20/2002	Can't Access EA	Can't access EA
CP01-387	100 FERC 61,276; 97 FERC 61,363; 102 FERC 61,054	Algonquin Gas Transmission Company (Islander East Project); Islander East Pipeline Company, L.L.C.	0;50.4	CT, NY	9/19/2002	No Analysis	Better than alternative
CP01-438	98 FERC 61,354; 100 FERC 61,289	Northwest Pipeline Corporation (Rockies Displacement Project)	91.1	ID, OR, WY	9/23/2002	No Analysis	No Analysis
CP02-31	101 FERC 61,131	Iroquois Gas Transmission Brookfield Project	0	CT	10/31/2002	No Analysis	No Analysis
CP01-415	98 FERC 61,331; 101 FERC 61,188; 102 FERC 61,225	East Tennessee Natural Gas Company (Patriot Project)	183	NC, TN, VA	11/20/2002	Unclear	Downstream
CP02-142	101 FERC 61,337	Columbia Gas Transmission Corporation Rock Springs Expansion	9.1	PA	12/20/2002	No EA	No EA
CP02-116	101 FERC 61,360; 103 FERC 61,013	Tennessee Gas Pipeline Company South Texas Expansion Project	16.8	TX	12/24/2002	Can't Access EA	Can't access EA
CP03-7	102 FERC 61,246	Colorado Interstate Gas Company	0	CO	2/28/2003	Can't Access EA	Can't access EA
CP02-381	102 FERC 61,245; 101 FERC 61,120	Texas Eastern Transmission, LP M-1 Expansion Project	32	AL, MS, TN	2/28/2003	No Analysis	Better than alternative
CP02-436	103 FERC 62,028	Northern Natural Gas Company Project MAX	4.6	MN	4/17/2003	No Analysis	No Analysis
CP03-18	103 FERC 61,150	City of Duluth Public Works & Utilities	5.3	MN, WI	5/7/2003	No Analysis	No Analysis
CP02-37	103 FERC 61,269	Williston Basin Interstate Pipeline Company (Grasslands Pipeline Project)	253	WY, MT, ND	6/2/2003	No Analysis	No Analysis
CP03-1	103 FERC 61,280; 105 FERC 61,202	El Paso Natural Gas Company Line 2000 Power-Up Project (Phase I) Phase I; El Paso Natural Gas Company Line 2000 Power-Up Project (Phase II) Phase II; El Paso Natural	0	AZ, NM, TX	6/4/2003	No Analysis	No Analysis

		Gas Company Line 2000 Power-Up Project (Phase III) Phase III					
CP02-434	103 FERC 61,297; 101 FERC 61,376; 104 FERC 61,301	ANR Pipeline Company West Leg Expansion	32.8	IL, WI	6/5/2003	No Analysis	Better than alternative
CP03-84	103 FERC 62,151	Transcontinental Gas Pipe Line Corp. Mobile Bay Replacement Project	1.5	AL	6/17/2003	No Analysis	No Analysis
CP03-31	104 FERC 61,078	Paiute Pipeline Company	14.5	NV	7/14/2003	Can't Access EA	Can't access EA
CP03-32	104 FERC 61,176	Northwest Pipeline Corporation	0.8	WA	7/30/2003	Yes	No Analysis
CP03-43	104 FERC 61,267	Texas Eastern Transmission, LP Mid-Atlantic Expansion Project	34.6	PA	9/11/2003	No Analysis	No Analysis
CP03-57	104 FERC 61,303	El Paso Natural Gas Company Bondad Expansion Project	0	CO	9/17/2003	No Analysis	No Analysis
CP03-80	105 FERC 61,049	Eastern Shore Natural Gas Company	5.7	DE, PA	10/8/2003	No Analysis	No Analysis
CP03-323	105 FERC 61,051	Pinnacle Pipeline Company	2.4	NM	10/8/2003	No Analysis	No Analysis
CP03-74	105 FERC 61,234	Dominion Cove Point LNG, LP Cove Point East Project	0	VA	11/18/2003	No Analysis	No Analysis
CP02-90	106 FERC 61,090; 103 FERC 61,030; 143 FERC 61,034	AES Ocean Express LLC Ocean Express Pipeline (LNG/Bhms)	53.6	FL	1/29/2004	Unclear	No Analysis
CP01-49	96 FERC 61,129; 97 FERC 61,089; 106 FERC 61,174; 107 FERC 61,192	Northwest Pipeline Corporation Everett Delta Lateral Project	9.2	WA	2/18/2004	No Analysis	No Analysis
CP01-409	106 FERC 61,273; 103 FERC 61,106; 137 FERC 61,098	Calypso U.S. Pipeline, LLC Calypso Pipeline Project (LNG/Bhms)	41.8	FL	3/24/2004	Unclear	No Analysis
CP04-12	106 FERC 61,276	TransColorado Gas Transmission Corp. TransColorado Expansion	0.1	CO	3/24/2004	No Analysis	No Analysis

CP03-301	106 FERC 61,275; 105 FERC 61,095; 108 FERC 61,052	Colorado Interstate Gas Company Cheyenne Plains Jumper Compressor Project; Cheyenne Plains Gas Pipeline Company Cheyenne Plains Project (PF03-1)	0; 387.2	CO, KS	3/24/2004	Yes	Downstream
CP04-30	106 FERC 61,319	Transcontinental Gas Pipe Line Corp.	0	SC	3/30/2004	No Analysis	No Analysis
CP03-342	107 FERC 61,124	Discovery Gas Transmission LLC Market Expansion Project	2.5	LA	5/6/2004	No Analysis	No Analysis
CP04-90	107 FERC 62,124	Wyoming Interstate Company, Ltd. Echo Springs Project	5.3	WY	5/11/2004	No Analysis	No Analysis
CP04-67	107 FERC 61,251	Algonquin Gas Transmission Company Everett Alternative Project	0.1	CT, MA, RI	6/2/2004	No Analysis	No Analysis
CP04-1	107 FERC 61,250	ANR Pipeline Company NorthLeg Project	0	WI	6/2/2004	No Analysis	No Analysis
CP04-51	108 FERC 61,042	ANR Pipeline Company EastLeg Project	8.2	WI	7/12/2004	No Analysis	No Analysis
CP04-347	108 FERC 62,096	Questar Pipeline Company	0	UT	7/28/2004	No EA	No EA
CP04-104	108 FERC 61,157	Transwestern Pipeline Company San Juan Lateral Expansion (PF03-8)	72.6	NM	8/5/2004	Yes	No Analysis
CP04-314	108 FERC 61,195	Algonquin Gas Transmission Company I-8 System Uprate Project	0	MA	8/18/2004	No Analysis	No Analysis
CP04-87	108 FERC 61,204	Natural Gas Pipeline Company of America	0	OK, TX	8/23/2004	Can't Access EA	Can't access EA
CP04-64	108 FERC 61,251	Trunkline Gas Company, LLC LNG Loop Project	22.8	LA	9/17/2004	No Analysis	No Analysis
CP04-345	108 FERC 62,269; 109 FERC 61,291	Cheyenne Plains Gas Pipeline Co., LLC Cheyenne Plains 2005 Expansion Project	0	CO	9/27/2004	No Analysis	No Analysis
CP04-377	109 FERC 62,118	CenterPoint Energy Gas Transmission Co	0	AR	11/23/2004	No Analysis	No Analysis

CP04-420	109 FERC 62,220	Trunkline Gas Company, LLC	0	TX	12/17/2004	No Analysis	No Analysis
CP04-38	109 FERC 61,324	Cheniere Sabine Pass Pipeline Co. (see CP04-47) (transports Sabine Pass LNG, L.P. 2,600 MMcf/d)	16	LA	12/21/2004	Yes	No Analysis
CP04-343	109 FERC 61,333	Paiute Pipeline Company	0	NV	12/22/2004	Can't Access EA	Can't access EA
CP05-1	110 FERC 62,045	Eastern Shore Natural Gas Company	0	DE, PA	1/19/2005	No Analysis	No Analysis
CP05-5	110 FERC 61,035	Questar Pipeline Company (PF04-6-000) Southern System Expansion Project	18.7	CO, UT	1/21/2005	No Analysis	No Analysis
CP04-60	110 FERC 61,047	Tennessee Gas Pipeline Company Tewksbury-Andover Lateral Project	5.3	MA	1/24/2005	No Analysis	No Analysis
CP04-340	110 FERC 61,052	Southern Natural Gas Company	6.4	GA	1/25/2005	No Analysis	No Analysis
CP04-396	110 FERC 61,115; 111 FERC 61,019	Transcontinental Gas Pipe Line Corporation Central new Jersey Expansion Project (PF04-12)	3.8	NJ	2/10/2005	No Analysis	No Analysis
CP04-424	110 FERC 61,260	Petal Gas Storage, L.L.C.	0	MS	3/7/2005	No Analysis	No Analysis
CP04-44	111 FERC 61,081; 139 FERC 61,195	Cheniere Corpus Christi Pipeline Company (transports Corpus Christi LNG, L.P.'s 2,600 MMcf/d)	24	TX	4/18/2005	Yes	No Analysis
CP05-37	111 FERC 61,093	Transcontinental Gas Pipe Line Corp.	0	VA	4/19/2005	No Analysis	No Analysis
CP05-45	111 FERC 62,224	TransColorado Gas Transmission Corp. North Expansion Project	0.4	CO	5/27/2005	No Analysis	No Analysis
CP05-3	111 FERC 61,273	CenterPoint Energy Gas Transmission Co. Line AD Transportation Expansion	0	OK	5/27/2005	No Analysis	No Analysis
CP05-50	111 FERC 61,331	Colorado Interstate Gas Company (PF05-1) Raton Basin 2005 Expansion Project	102	CO, KS, OK	6/1/2005	No Analysis	No Analysis

CP05-34	111 FERC 62,236	Natural Gas Pipeline Company of America	0	OK, TX	6/1/2005	No Analysis	No Analysis
CP04-405	111 FERC 61,432; 132 FERC 61,157	Vista del Sol Pipeline LP (project will not be built) ExxonMobil (PF04-3) (see Vista Terminal 04-395)	25	TX	6/20/2005	Yes	Better than alternative
CP05-2	111 FERC 61,408; 113 FERC 61,183	El Paso Natural Gas Company Line No. 1903 Project	6.4	AZ, CA	6/16/2005	Yes (draft EIS)	No Analysis (draft EIS)
CP05-119	111 FERC 61,490	Cameron Interstate Pipeline, LLC (See Cameron LNG, LLC/CP02-374)	36.5	LA	6/27/2005	No EA	No EA
CP03-80	111 FERC 61,479	Eastern Shore Natural Gas Company	21	DE, PA	6/27/2005	No Analysis	No Analysis
CP05-73	112 FERC 61,042	Northern Natural Gas Company	0	MN	7/6/2005	No Analysis	No Analysis
CP04-400	112 FERC 61,041	Golden Pass Pipeline LP (PF04-1) (see CP04-386) (see Golden Pass LNG Terminal LP deliv)		LA, TX	7/6/2005	Yes	No Analysis
CP04-41	112 FERC 61,070; 136 FERC 61,015	Mill River Pipeline, LLC (transports Weaver's Cove's 800 MMcf/d)	6.1	MA	7/15/2005	Yes	Downstream
CP05-11	112 FERC 61,101; 136 FERC 61,114	San Patricio Pipeline LLC (PF04-9) (See Ingleside Energy Center LLC/CP05-13)	26.4	TX	7/22/2005	Yes	No Analysis
CP05-74	112 FERC 62,078	Maritimes & Northeast Pipeline, L.L.C. Haverhill Project	0.1	MA	7/27/2005	No Analysis	No Analysis
CP05-40	112 FERC 61,141; 113 FERC 61,169	Rendezvous Gas Services, L.L.C.	20.8	WY	7/27/2005	No Analysis	No Analysis
CP04-413	112 FERC 61,177; 113 FERC 61,327	Entrega Gas Pipeline Inc. (PF04-7) EnCana Project (Rockies Express)	327	CO, WY	8/9/2005	Yes	No Analysis
CP05-49	112 FERC 62,118	Northern Natural Gas Company Bluff Creek/Tomah Expansion	3.2	MN, WI	8/10/2005	No Analysis	No Analysis

CP05-88	112 FERC 61,196	Northern Border Pipeline Company Chicago Expansion III Project	0	IL, IA	8/18/2005	No Analysis	No Analysis
CP05-32	112 FERC 61,269; 111 FERC 61,293	Northwest Pipeline Corporation Capacity Replacement Project (PF04-10)	79.5	WA	9/13/2005	Yes	No Analysis
CP05-54	112 FERC 61,327	Wyoming Interstate Company, Ltd. Piecance Basin Expansion Project (PF04-13)	141.7	CO, WY	9/22/2005	Unclear	No Analysis
CP05-76	113 FERC 61,064; 114 FERC 61,039	Dominion South Pipeline Co., LP	0.1	TX	10/20/2005	No Analysis	No Analysis
CP05-144	113 FERC 61,118; 114 FERC 61,209	Columbia Gas Transmission Corporation (see Hardy Storage Co., LLC) (PF04-14)	33.1	MD, VA, WV	11/1/2005	No Analysis	No Analysis
CP05-364	113 FERC 61,255	ANR Pipeline Company Wisconsin 2006 Expansion Project	6.9	WI	12/12/2005	No Analysis	No Analysis
CP05-416	113 FERC 61,270	Tennessee Gas Pipeline Company Triple-T Expansion Project	6.2	LA	12/15/2005	No EA	No EA
CP06-16	114 FERC 62,117	Transcontinental Gas Pipe Line Corp. Station 50 HP Replacement Project	0	LA	2/6/2006	No Analysis	No Analysis
CP05-413	114 FERC 61,122	East Tennessee Natural Gas, LLC (PF05-3) Jewell Ridge Pipeline	32	VA	2/8/2006	No Analysis	No Analysis
CP06-2	114 FERC 62,158	Texas Gas Transmission, LLC Houghton Compressor Station T-1 Turbine Proj	0	LA	2/15/2006	Can't Access EA	Can't access EA
CP05-372	114 FERC 61,257	Midwestern Gas Transmission Company MGT Eastern Extension Project (PF05-2)	30.9	TN	3/10/2006	No Analysis	No Analysis
CP06-50	114 FERC 62,326	Panhandle Eastern Pipe Line Co., LP Liberal 100-Line Bi-Directional Project	0	KS	3/30/2006	No Analysis	No Analysis
CP06-35	115 FERC 61,119	Trunkline Gas Company, LLC	0	TX	4/26/2006	No Analysis	No Analysis

CP06-9	115 FERC 61,140	Florida Gas Transmission Company (PF05-13) FL Turnpike Enterprise SR 91 Widening	26	FL	5/3/2006	No Analysis	No Analysis
CP05-412	115 FERC 61,160; 117 FERC 61,034; 119 FERC 61,195	Tennessee Gas Pipeline Company Northeast ConneXion Project-New England	0	MA, NY, PA	5/9/2006	No Analysis	No Analysis
CP04-68	115 FERC 61,201; 143 FERC 61,202	Freeport-McMoRan Energy LLC Coden Onshore Pipeline (see FME MPEH)	5.1	AL	5/18/2006	Yes	No Analysis
CP06-34	115 FERC 61,200	Transcontinental Gas Pipe Line Corp. Leidy to Long Island Expansion (PF05-6)	14.3	NJ, NY, PA	5/18/2006	No Analysis	No Analysis
CP05-357	115 FERC 61,331; 117 FERC 61,341	Cheniere Creole Trail Pl Co (PF05-8) (FD7/1/05; 8/4/06) (see Creole Trail LNG, L.P./CP05-360) (partially vacated)	134.9	LA	6/15/2006	Unclear	No Analysis
CP05-388, CP06-1	115 FERC 61,328; 113 FERC 61,199	Southern Natural Gas Company (PF05-7) Cypress Pipeline Project (see CP06-1); Florida gas Transmission Co. (PF05-11) Phase VII Expansion (Phase I and II) (see CP05-388)	177; 32.6	FL, GA	6/15/2006	Yes	Downstream
CP05-131, CP05-132	115 FERC 61,337; 118 FERC 61,007; 125 FERC 61,018; 126 FERC 61,036	Dominion Transmission, Inc. (see DCP LNG/CP05-130 & CP05-132); Dominion Cove Point LNG, LP (see DCP/CP05-130 & DTI/CP05-131)	114; 47	NY, PA, VA, WV, MD	6/16/2006	Yes	No Analysis
CP05-84	115 FERC 61,344; 136 FERC 61,196	Port Arthur Pipeline, L.P. (see Port Arthur LNG, L.P./CP05-83)	73	LA, TX	6/19/2006	Yes	No Analysis
CP04-416	115 FERC 61,348; 117 FERC 61,209; 138 FERC 61,132	Texas Eastern Transmission, LP (PF04-5) Logan Lateral	11	NJ, PA	6/20/2006	Yes	Downstream

		(see Crown Landing CO04-411)					
CP06-58	116 FERC 62,035	Southern Natural Gas Company	6.1	AL	7/14/2006	No Analysis	No Analysis
CP06-18	116 FERC 61,075; 123 FERC 61,141	Tennessee Gas Pipeline Company Essex-Middlesex Lateral Project	7.8	MA	7/20/2006	No Analysis	No Analysis
CP06-45	116 FERC 61,151	Northwest Pipeline Corp. Parachute Lateral Project	37.6	CO	8/16/2006	No Analysis	No Analysis
CP06-94	116 FERC 61,189	Southern Star Central Gas Pipeline, Inc. Ozark Trails Expansion	2	KS, MO	8/29/2006	No Analysis	No Analysis
CP06-167	116 FERC 61,225	Questar Overthrust Pipeline Co. (PF06-9) Overthrust to Opal Pipeline Project	27.1	WY	9/8/2006	No Analysis	No Analysis
CP06-143	116 FERC 62,225	Algonquin Gas Transmission, LLC Cape Cod Project	3.5	MA	9/22/2006	No Analysis	No Analysis
CP06-85	117 FERC 61,003	CenterPoint Energy Gas Transmission Co. (PF06-1) Carthage to Perryville Project	171.9	LA, TX	10/2/2006	Yes	No Analysis
CP04-400-001	117 FERC 61,015; 112 FERC 61,041; 117 FERC 61,332	Golden Pass Pipeline LP (PF06-8) Optimimization Variations (see CP04-400 et al)	113	LA, TX	10/4/2006	No Analysis	No Analysis
CP06-29	117 FERC 61,018	Vector Pipeline L.P. 2007 Expansion Project	0	IL, MI	10/4/2006	No Analysis	No Analysis
CP06-275	117 FERC 61,184	Equitrans, L.P. (PF06-12) Big Sandy Pipeline Project	69.9	KY	11/15/2006	Yes	No Analysis
CP06-76, CP98-150, CP06-5, CP02-31	117 FERC 61,319; 116 FERC 61,074; 119 FERC 61,173	Algonquin Gas Transmission Co. (PF06-5) Ramapo Expansion Project; Millennium Pipeline Company, L.P. (Company, L.L.C./CP98-150-008); Empire Pipeline, Inc. (PF04-16) Empire Connector Project; Iroquois Project; Columbia Gas Transmission Corporation	4.8; 181.7; 78; 0; 8.8	CT, NJ, NY	12/21/2006	No Analysis	No Analysis

CP06-34	118 FERC 62,027	Transcontinental Gas Pipe Line Corp. Leidy to Long Island Expansion (PF05-6)	0	NJ, NY, PA	1/11/2007	No Analysis	No Analysis
CP06-13	118 FERC 61,128	Gulf LNG Pipeline, LLC (LNG Clean Energy Project) (see Gulf LNG Energy, LLC/CP06-12)	5	MS	2/16/2007	Unclear	No Analysis
CP06-403	118 FERC 61,136	Northern Natural Gas Company (PF06-7) Northern Lights Expansion Project (see CP06-433)	67.2	IA, MN	2/21/2007	No Analysis	No Analysis
CP06-335	118 FERC 61,137; 120 FERC 61,055	Maritimes & Northeast Pipeline, L.L.C. (PF05-17) Phase IV Expansion (II)	1.7	MA, ME	2/21/2007	No	No Analysis
CP05-383	118 FERC 61,222	Algonquin Gas Transmission, LLC	16.4	MA	3/16/2007	No Analysis	No Analysis
CP06-421	119 FERC 61,039; 120 FERC 61,181	Transcontinental Gas Pipe Line Corp (PF06-2) Potomac Expansion Project	19.8	VA	4/12/2007	No Analysis	No Analysis
CP07-28	119 FERC 62,037	Southern Natural Gas Company	6.8	AL	4/16/2007	No Analysis	No Analysis
CP06-354, CP06-401	119 FERC 61,069; 116 FERC 61,272	Rockies Express Pipeline LLC (PF06-3) (KM/Sempre) REX-West Project (see REX-East/CP07-208); TransColorado Gas Transmission Co. (PF06-20) Blanco-Meeker Expansion Project; Questar Overthrust Pipeline Co. (PF06-19) Wamsutter Expansion Project	718; 0.3; 77.3	CO, KS, MO, NE, WY; NM	4/19/2007	No Analysis	No Analysis
CP07-25	119 FERC 61,077	Questar Pipeline Company (PF06-18) Southern System Expansion Project II	58.6	UT	4/23/2007	No Analysis	No Analysis
CP06-452	119 FERC 61,078	Trunkline Gas Company, LLC North Texas Expansion/Field Zone Expansion	58.5	LA, TX	4/23/2007	No Analysis	No Analysis

CP06-433	119 FERC 61,111	Northern Natural Gas Company Palmyra North Expansion (see CP06-403)	2	IA, KS, NE, SD	5/2/2007	No Analysis	No Analysis
CP07-41	119 FERC 61,138	CenterPoint Energy Gas Transmission Co. Carthage to Perryville Proj/Phase III Exp	0	LA, TX	5/17/2007	No Analysis	No Analysis
CP07-14	119 FERC 61,251; 121 FERC 61,135	Wyoming Interstate Co., Ltd. (PF06-15) Kanda Lateral and Mainline Expansion Project	123	UT, WY	6/7/2007	Yes	No Analysis
CP00-6-014	119 FERC 61,250	Gulfstream Natural Gas System, L.L.C. Phase III Expansion Project	34.3	FL	6/7/2007	No Analysis	No Analysis
CP06-115	119 FERC 61,258; 121 FERC 61,003	Texas Eastern Transmission, LP TIME II Project	31.9	OH, PA	6/8/2007	No Analysis	No Analysis
CP06-446	119 FERC 61,281	Gulf South Pipeline Company, :P (PF06-17; 23) East TX/North LA Exp Loop/MS Exp	241.9	LA, MS, TX	6/18/2007	Yes	No Analysis
CP06-449	119 FERC 61,309; 118 FERC 61,211	Kinder Morgan Louisiana Pipeline LLC (PF06-16) (see Sabine Pass LNG-CP05-396)	135.3	LA	6/22/2007	No Analysis	No Analysis
CP07-3	120 FERC 61,004	Natural Gas Pipeline Co. of America Louisiana Line Expansion Project	4.4	LA, TX	7/2/2007	No Analysis	No Analysis
CP07-74	120 FERC 61,032; 142 FERC 61,184	Sonora Pipeline, LLC (transp LNG) (PF05-15) Burgos Hub Exp/Imp Proj (Mission/Progreso PL)	28.9	TX	7/10/2007	No Analysis	No Analysis
CP06-455	120 FERC 61,050	Kinder Morgan Illinois Pipeline LLC Kinder Morgan Illinois Pipeline Project	3.1	IL	7/17/2007	Can't Access EA	Can't access EA
CP07-27	120 FERC 62,072	Tuscarora Gas Transmission Company 2008 Expansion Project	0	CA	7/24/2007	No Analysis	No Analysis
CP07-51	120 FERC 61,225	Gulfstream Natural Gas System, L.L.C. (PF06-29) Phase IV Project/HP (add CP07-51 P/L for total)	17.7	AL, FL	9/10/2007	No Analysis	No Analysis

CP07-44	120 FERC 61,257; 119 FERC 61,153	Southeast Supply Header, LLC/SoNat (PF06-28) SESH Project (add CP07-45 for total proj); Southeast Supply Header, LLC (PF06-28) SESH Project (add CP07-44 for total proj)	115.4; 154	LA, MS; AL, MS	9/20/2007	Yes	No Analysis
CP06-471	120 FERC 61,258; 119 FERC 61,015; 137 FERC 61,034	Elba Express, L.L.C. (see Southern LNG) (PF06-14) Elba III Project (Phase A and B)	189	GA, SC	9/20/2007	Yes	No Analysis
CP05-380	120 FERC 61,259; 142 FERC 61,121	Point Comfort Pipeline Company, L.P. (see Calhoun LNG, L.P./CP05-91)	27.6	TX	9/20/2007	No	No Analysis
CP07-32	120 FERC 61,291; 122 FERC 61,162	Gulf South Pipeline Co. LP (PF06-31) Southeast Expansion Project	110.8	AL, LA, MS	9/28/2007	Yes	No Analysis
CP06-61	117 FERC 61,022; 121 FERC 61,010; 123 FERC 61,073	North Baja Pipeline, LLC (PF05-14) LNG Expansion Project (Phase I)	125.6	AZ, CA	10/2/2007	Yes	Downstream
CP07-395	121 FERC 61,054	Wyoming Interstate Company, Ltd. Medicine Bow Expansion Project	0	WY	10/18/2007	No Analysis	No Analysis
CP07-411	121 FERC 61,159	Texas Eastern Transmission, LP Cedar Bayou Lateral Project	3.8	TX	11/15/2007	No Analysis	No Analysis
CP06-459	121 FERC 61,175; 122 FERC 61,165	Transwestern Pipeline Company (PF06-4) Phoenix Expansion-Phoenix P/L/ San Juan '08 Exp	284	AZ, NM	11/15/2007	Yes	No Analysis
CP07-8	121 FERC 61,259	Guardian Pipeline, L.L.C. (PF06-21) G-II: Expansion and Extension	119.2	IL, WI	12/14/2007	Yes	No Analysis
CP07-457	122 FERC 61,242	Iroquois Gas Transmission System, L.P. 08/09 Expansion Project	84	NY, CT	3/20/2008	No Analysis	No Analysis
CP06-54	122 FERC 61,255; 140 FERC 61,009	Broadwater Energy LLC, Broadwater Project	22	NY	3/20/2008	No Analysis	No downstream

CP07-207	122 FERC 61,256	Colorado Interstate Gas Company/High Plains Expansion Project	164	CO	3/21/2008	No Analysis	No Analysis
CP07-398	123 FERC 61,100	Gulf Crossing Pipeline Company, LLC	353.2	TX, OK, LA	4/30/2008	Yes	No downstream
CP07-417	123 FERC 61,118	Texas Gas Transmission, LLC	262.6	MS, AR	5/2/2008	Yes	No Analysis
CP07-208	123 FERC 61,234; 125 FERC 61,160	Rockies Express Pipeline LLC/East	638	MO, IL, IN, OH	5/30/2008	No Analysis	No Analysis
CP08-6	124 FERC 61,089; 134 FERC 61,155; 136 FERC 61,222	Midcontinent Express Pipeline LLC/Midcontinent	506	OK, AL, LA, MS, TX	7/25/2008	Yes	No Analysis
CP08-31	124 FERC 61,160; 125 FERC 61,086; 125 FERC 61,249	Transcontinental Gas Pipe Line Corporation/Sentinel Expansion Project	17.9	PA, NJ	8/14/2008	No Analysis	No Analysis
CP06-365, et al	124 FERC 61,257; 126 FERC 61,035; 128 FERC 61,216	Bradwood Landing LLC and Northern Star Energy/Bradwood Landing LNG	36.3	OR, WA	9/18/2008	Yes	Downstream
CP07-62	126 FERC 61,019; 145 FERC 61,113	AES Sparrows Point, LLC and Mid-Atlantic Express, LLC/Sparrows Point Project	88	MD, PA	1/15/2009	Yes	No downstream
CP08-462	126 FERC 62,077	Algonquin Gas Transmission, LLC Kleen Energy Lateral	1.1	CT	2/5/2009	No Analysis	No Analysis
CP08-256	126 FERC 61,110	Algonquin Gas Transmission, LLC J-2 Loop Project	2.3	MA	2/11/2009	No Analysis	No Analysis
CP08-477	127 FERC 61,009	Northwest Pipeline GP Colorado Hub Connection Project	27.4	CO	4/2/2009	No	No Analysis
CP08-467	127 FERC 61,046	Texas Gas Transmission, LLC Fayetteville Shale Compression Project	0	AR, MS	4/16/2009	No Analysis	No Analysis
CP09-29	127 FERC 61,087	CenterPoint Energy Gas Transmission Co.	0	LA	4/27/2009	No Analysis	No Analysis
CP08-476	127 FERC 61,122	Transcontinental Gas Pipe Line Co. LLC Mobile Bay South Expansion Project	0.5	AL	5/7/2009	No Analysis	No downstream

CP09-11	127 FERC 61,133	Northern Natural Gas Company Northern Lights 2009/10 Zone EF Exp Proj	52.2	MN	5/13/2009	No Analysis	No Analysis
CP08-429	127 FERC 61,223; 128 FERC 61,024; 129 FERC 61,115	Kern River Gas Transmission Company 2010 Expansion Project	0	CA, WY	6/4/2009	No Analysis	No downstream
CP09-58	128 FERC 61,036	Rockies Express Pipeline LLC	0	CO, WY	7/17/2009	No Analysis	No Analysis
CP09-76	128 FERC 61,129	Questar Overthrust Pipeline Co. Overthrust Compression Expansion Project	0	WY	08/03/2009	No Analysis	No Analysis
CP09-36, CP09-40	128 FERC 61,198; 130 FERC 61,193	Southern Natural Gas Company South System Expansion III Project	81.1	GA, MS, AL	8/27/2009	No Analysis	No Analysis
CP09-57	128 FERC 61,223; 130 FERC 61,010	Transcontinental Gas Pipe Line Co., LLC 85 North Expansion Project	22	AL, GA	9/3/2009	No Analysis	No downstream
CP09-56	128 FERC 61,253; 131 FERC 61,118	Midcontinent Express Pipeline LLC	0	LA, MS, TX	9/17/2009	No Analysis	No downstream
CP09-18	129 FERC 61,012	Dominion Transmission, Inc. Dominion Hub III Project	9.4	PA, WV	10/6/2009	No Analysis	No Analysis
CP09-237	129 FERC 62,070	Transcontinental Gas Pipe Line Co., LLC Delta Lateral Project	3.4	PA	10/28/2009	No Analysis	No Analysis
CP09-68	129 FERC 61,151; 131 FERC 61,164	Texas Eastern Transmission, LP/TEMAX and TIME III Projects	62	PA	11/19/2009	Yes	No Analysis
CP09-415	129 FERC 61,136	Northwest Pipeline GP Sundance Trail Expansion Project	15.5	CO, WY	11/19/2009	No Analysis	No Analysis
CP09-17	129 FERC 61,150	Florida Gas Transmission Company, LLC/Phase VIII Expansion Project	483.2	FL, AL	11/19/2009	No Analysis	No downstream
CP07-191	129 FERC 61,199; 153 FERC 61,084	Port Dolphin Energy LLC/Port Dolphin Project	3.93	FL	12/3/2009	Can't Access EIS	Can't access EIS
CP09-433	129 FERC 61,235	Fayetteville Express Pipeline LLC, Fayetteville Express Pipeline	184.8	AR, MS	12/17/2009	Yes	No Analysis

CP08-420	130 FERC 61,011	Algonquin Gas Transmission, LLC, Hubline/East to West Project	2.6	NJ, CT	1/5/2010	No Analysis	No downstream
CP09-420	130 FERC 61,015	Gulf South Pipeline Company, LP Haynesville/Perryville Expansion Project	0.8	LA	1/6/2010	No Analysis	No downstream
CP09-417	130 FERC 61,019	Transcontinental Gas Pipe Line Co. LLC Bayonne Delivery Lateral Project	0.8	NJ	1/8/2010	No Analysis	No Analysis
CP09-449	130 FERC 61,251	Wyoming Interstate Company, Ltd. Diamond Mountain Compressor Station Proj	0	UT	3/26/2010	No Analysis	No downstream
CP09-54 (PF08-9)	131 FERC 61,007; 128 FERC 61,224	Ruby Pipeline, LLC Ruby Pipeline Project	677.8	NV, OR, UT, WY	4/5/2010	Yes	Downstream
CP09-460	131 FERC 61,010	ETC Tiger Pipeline, LLC/Tiger Pipeline Project	175	LA, TX	4/7/2010	Yes	No downstream
CP09-161	131 FERC 61,013; 132 FERC 62,163; 149 FERC 61,243	Bison Pipeline LLC/ Bison Pipeline Project	302	MT, ND, WY	4/9/2010	Yes	No downstream
CP09-464	131 FERC 61,086	Colorado Interstate Gas Company/ Raton 2010 Expansion Project	118.6	CO	4/29/2010	No Analysis	No downstream
CP09-444	131 FERC 61,140	Tennessee Gas Pipeline Company/Line 300 Expansion	128.7	NJ, PA	5/14/2010	No Analysis	No downstream
CP10-13	131 FERC 62,262	Wyoming Interstate Company 2010 System Enhancement Project	2.4	WY	6/25/2010	No Analysis	No Analysis
CP09-456	132 FERC 61,040	Transcon Gas Pipe Line cp/FGT Co Pasacgoula Expansion Proj (see FGT/CP09-455)	15.5	AL, MS	7/15/2010	No Analysis	No downstream
CP09-455	132 FERC 61,040	Florida Gas Transmission Co Mobile Bay Lateral Extension Proj (see Transco CP09-456)	8.8	AL	7/15/2010	No Analysis	No downstream

CP10-21	132 FERC 61,071	Transcontinental Gas Pipe Line Corporation Mobile Bay South II Expansion Project	0	AL	7/26/2010	No Analysis	No downstream
CP10-3	132 FERC 61,191	Questar Overthrust Pipeline Company Main Line (ML) 133 Loop Expansion Project	43.3	WY	8/31/2010	No Analysis	No Analysis
CP10-14	132 FERC 61,226	Kern River Gas Transmission Co Apex Expansion Project	28	NV, UT, WY	9/16/2010	Unclear	No downstream
CP10-89	133 FERC 61,080	East Tennessee Natural Gas, LLC (PF09-13) Northeastern Tennessee Proj (NET proj)	28.1	VA, TN	10/25/2010	No Analysis	No downstream
CP10-468	133 FERC 62,159	Northern Border Pipeline Company Princeton Lateral Project	8.6	IL	11/22/2010	No Analysis	No downstream
CP10-458	133 FERC 61,235	National Fuel Gas Supply Corporation Line N Compressor installation Proj (see CP10-457)	1.9	PA	12/16/2010	No Analysis	No downstream
CP10-471	133 FERC 61,220	Texas Eastern Transmission, LP Hot Spring Lateral Project	8.4	AR	12/16/2010	No Analysis	No Analysis
CP10-194	134 FERC 61,035	Central New York Oil & Gas Company, LLC	0	NY, PA	1/20/2011	No Analysis	No downstream
CP10-459	134 FERC 61,084	ETC Tiger Pipeline, LLC ETC Tiger Pipeline Expansion Project	20.5	LA	2/3/2011	No Analysis	No downstream
CP11-25	135 FERC 61,114	Questar Pipeline Company (PF10-7) ML 104 Extension Project	24.6	UT	5/4/2011	No Analysis	No downstream
CP10-493	135 FERC 61,163	Empire Pipeline, Inc. (PF10-5) Tioga County Extension Project	16.4	NY, PA	5/19/2011	No Analysis	No downstream
CP10-448	135 FERC 61,239; 136 FERC 61,031	Dominion Transmission, Inc. (PF09-15) Appalachian Gateway Project	107.4	PA, WV	6/16/2011	Yes	No downstream
CP11-31	136 FERC 61,009	Transcontinental Gas Pipe Line Co. LLC (PF10-16) Mid-Atlantic Connector Project	2.8	VA	7/1/2011	No Analysis	No downstream

CP11-68	136 FERC 61,046; 143 FERC 61,108	Equitrans, L.P. (PF10-19) Sunrise Project	47	PA, WV	7/21/2011	Yes	No downstream
CP11-39	136 FERC 61,126	Dominion Transmission, Inc. Northeast Expansion Project	0	PA	8/24/2011	No Analysis	No downstream
CP11-18	136 FERC 61,129; 140 FERC 61,241	Transcontinental Gas Pipe Line CO., LLC (PF10-13) Mid-South Expansion Project	22.6	AL, GA, NC	8/25/2011	No Analysis	No downstream
CP11-30, CP11-41	136 FERC 61,173	Tennessee Gas Pipeline Company Northeast Supply Diversification Project (NSD) (see CP11-41); Dominion Transmission Inc Ellisburg to Craigs Project	6.8; .5	NY, PA	9/15/2011	No Analysis	No downstream
CP11-128, CP11-133	137 FERC 61,054; 138 FERC 61,048; 139 FERC 61,037	National Fuel Gas Supply Corp. (see CP11-133/Tn) Northern Access Expansion Project	0	NY, PA	10/20/2011	No Analysis	No downstream
CP10-480	137 FERC 61,121; 138 FERC 61,104	Central New York Oil & Gas Company, LLC MARC I Project	39	PA	11/14/2011	No Analysis	No downstream
CP11-67	137 FERC 61,140	Texas Eastern Transmission, LP (PF10-21) TEAM 2012 Expansion Project	17.8	OH, PA	11/17/2011	No Analysis	No downstream
CP11-549	138 FERC 62,080; 156 FERC 61,008	DCP Midstream, LP LaSalle Residue Line Project	11	CO	2/6/2012	No Analysis	No Analysis
CP11-490	138 FERC 61,205	Columbia Gas Transmission, LLC	2.5	MD, VA, WV	3/20/2012	No Analysis	No Analysis
CP11-512	138 FERC 61,224	National Fuel Gas Supply Corporation Line N 2012 Expansion Project	4.8	PA	3/29/2012	No Analysis	No downstream
CP11-547	139 FERC 61,119	Natural Gas Pipeline Company of America LLC (see storage docket)	0	IL	5/17/2012	No Analysis	No downstream
CP11-56	139 FERC 61,138; 141 FERC 61,043	Texas East Tran, LP/Algon Gas Tran, LLC (PF10-17), NJ-NY Expansion Project	20.3	NJ, NY	5/21/2012	Yes	No downstream

CP11-161	139 FERC 61,161; 142 FERC 61,025; 153 FERC 61,215; 156 FERC 61,007	Tennessee Gas Pipeline Company (PF10-23) Northeast Upgrade Project	39.5	NJ, PA	5/29/2012	Unclear	No downstream
CP11-515	140 FERC 61,045; 141 FERC 61,198	Millennium Pipeline Company, LLC Minisink Compressor Project	0.2	NY	7/17/2012	No Analysis	No downstream
CP12-28	140 FERC 61,120	Tennessee Gas Pipeline Company, LLC MMP Project	7.9	PA	8/9/2012	No Analysis	No downstream
CP12-50	140 FERC 61,212	Alliance Pipeline LP (PF11-7) Tioga Lateral Project (see CP13-21)	79.3	ND	9/20/2012	No Analysis	No downstream
CP12-468	140 FERC 62,238; 143 FERC 61,043	Atlas Pipeline Mid-Continent WestTex, LLC Pioneer Natural Resources USA, Inc.	10.2	TX	9/28/2012	No Analysis	No Analysis
CP12-6	141 FERC 61,026; 143 FERC 61,042	El Paso Natural Gas Company Willcox Lateral 2013 Expansion (See CP12-7)	0.1	AZ	10/12/2012	No Analysis	No downstream
CP12-30	141 FERC 61,091; 143 FERC 61,132	Transcontinental Gas Supply Co., LLC (PF11-4) Northeast Supply Link Expansion	12.5	NJ, NY, PA	11/2/2012	No Analysis	No downstream
CP12-520	141 FERC 62,183; 144 FERC 61,115	Gulf Shore Energy Partners, LP (see CP13-78)	0	TX	12/12/2012	No Analysis	No Analysis
CP12-72	141 FERC 61,240; 143 FERC 61,148	Dominion Transmission, Inc. (PF11-9) Allegheny Storage Project (see storage docket)	3.1	MD, OH, PA	12/20/2012	No Analysis	No downstream
CP12-351	142 FERC 61,137; 145 FERC 61,074	Cheniere Creole Trail Pipeline Co. Creole Trail Pipeline Expansion Project	0	LA	2/21/2013	No Analysis	No downstream
CP12-19, CP12-20	142 FERC 61,179	Dominion Transmission, Inc. Tioga Area Expansion Project; Dominion Transmission, Inc. Sabinsville to Morrisville Project	15.3; 3.6	NY, PA	3/8/2013	No Analysis	No downstream
CP12-494	142 FERC 61,186	Gas Transmission Northwest LLC (PF11-5) Carty Lateral Project	24.3	OR	3/14/2013	Yes	No downstream

CP12-496	142 FERC 62,229	Colorado Interstate Gas Co., LLC High Plains 2013 Expansion Proj/Lancaster Lateral	7.8	CO	3/20/2013	No Analysis	No downstream
CP12-516	143 FERC 61,171; 145 FERC 61,145	Discovery Gas Transmission LLC Junction Platform Project	19.5	LA	5/24/2013	No EA	No EA
CP13-13	144 FERC 61,182; 146 FERC 61,091	Dominion Transmission, Inc. Natrium to Market Project	0	PA	9/3/2013	No Analysis	No downstream
CP13-64	144 FERC 61,196	Gulf Crossing Pipeline Company, LLC Panda Power Lateral Project	16.5	TX	9/12/2013	No Analysis	No downstream
CP13-3	144 FERC 61,219	Tennessee Gas Pipeline Company Rose Lake Expansion Project	0	PA	9/19/2013	No Analysis	No downstream
CP13-14	145 FERC 61,007	Millennium Pipeline Company, LLC (PF12-10) Hancock Compressor Project	0.1	NY	10/1/2013	No	No downstream
CP13-96	145 FERC 61,139	Gulf South Pipeline Company, LP (PF12-21) Southeast Market Expansion Project	70	AL, MS	11/18/2013	Yes	No downstream
CP13-30	145 FERC 61,152	Transcontinental Gas Pipe Line Co., LLC (PF12-15) Virginia Southside Expansion Project	98	NC, NJ, VA	11/21/2013	No Analysis	No downstream
CP13-498	145 FERC 62,153	Eastern Shore Natural Gas Company White Oak Lateral Project	5.5	DE	11/27/2013	No Analysis	No downstream
CP13-477	145 FERC 61,257	Columbia Gas Transmission, LLC Smithfield III Expansion Project (see CP13-478)	0	PA, WV	12/19/2013	No Analysis	No downstream
CP13-509	145 FERC 62,229	DCP Midstream, LP Lucerne Residue Pipeline	7.6	CO	12/27/2013	No Analysis	No Analysis
CP13-547	147 FERC 61,032	Equitrans, L.P. Jefferson Compressor Station Expansion Project	0	PA	4/11/2014	No Analysis	No downstream

CP13-523	147 FERC 61,042	Transcontinental Gas Pipe Line Company, LLC Mobile Bay South III Expansion Project	0	AL	4/17/2014	No Analysis	No downstream
CP13-132, CP13-36	147 FERC 61,102; 151 FERC 61,065	Transcontinental Gas Pipe Line Company, LLC Northeast Connector Project; Transcontinental Gas Pipe Linc O., LLC (PF09-8) Rockaway Delivery Lateral Project	0; 3.2	NJ, PA	5/8/2014	Yes	No downstream
CP13-73; 74	147 FERC 61,192; 149 FERC 61,101	Sierrita Gas Pipeline LLC (PF12-11) Sierrita Pipeline Project	60.9	AZ	6/6/2014	Yes	No downstream
CP13-27	147 FERC 61,230; 148 FERC 61,073; 148 FERC 61,237	Cameron Interstate Pipeline, LLC (PF12-12) Cameron Interstate Pipeline Expansion Project	21	LA	6/19/2014	No Analysis	No downstream
CP14-18	148 FERC 61,110	Transcontinental Gas Pipe Line Company, LLC Woodbridge Delivery Lateral	2.4	NJ	8/11/2014	No Analysis	No downstream
CP14-87	148 FERC 61,121; 151 FERC 61,032	Southeast Supply Header, LLC SESH Expansion Project	0.8	LA	8/14/2014	No Analysis	No downstream
CP14-99	148 FERC 61,138	Columbia Gas Transmission, LLC	3.4	PA	8/22/2014	No Analysis	No Analysis
CP13-113	148 FERC 61,244; 151 FERC 61,095	Dominion Cove Point LNG, LP (FP12-16) Cove Point Liquefaction Project (see LNG proj)	0	VA	9/29/2014	Yes	No downstream
CP14-123	149 FERC 62,018	Questar Overthrust Pipeline Company Jurisdictional tap Line (JTL) Project	2.5	WY	10/9/2014	No Analysis	No downstream
CP14-101	149 FERC 61,022; 169 FERC 61,009	City of Clarksville, Tennessee (PF13-17)	20.8	KY, TN	10/9/2014	No Analysis	No downstream
CP14-21	149 FERC 61,096	Florida Gas Transmission Company, LLC Pompano	1.2	FL	10/30/2014	No	No Analysis

		Compressor Station 21.5 Project					
CP14-68	149 FERC 61,198	Texas Eastern Transmission, LP (PF13-15) OPEN (Ohio Pipeline Energy Network) Project	75.8	OH	12/2/2014	No Analysis	No downstream
CP14-514	149 FERC 61,197; 152 FERC 61,021	ANR Pipeline Company Sulphur Springs Compressor Project	0	IN	12/2/2014	No Analysis	No downstream
CP13-499	149 FERC 61,199; 169 FERC 61,102	Constitution Pipeline Company, LLC (PF12-9); Iroquois Gas Transmission System, LP (PF12-9) (see Constitution P/L/CP13-499)	124	NY, PA	12/2/2014	Unclear	No downstream
CP14-17	149 FERC 61,255; 153 FERC 61,064	Columbia Gas Transmission, LLC (PF13-7) East Side Expansion Project	19	MD, NJ, NY, PA	12/18/2014	No	No downstream
CP14-104	149 FERC 61,259	Texas Eastern Transmission, LP U2GC Project (Uniontown to Gas City Project)	0	IN, OH, PA	12/18/2014	No Analysis	No Analysis
CP13-551	149 FERC 61,258	Transcontinental Gas Pipe Line Co., LLC (PF13-5) Leidy Southeast Expansion Project	30	MD, NC,NJ, PA, VA	12/18/2014	Unclear	No downstream
CP12-508	149 FERC 61,283; 154 FERC 61,163; 169 FERC 61,241	Cheniere Corpus Christi Pipeline, LP (PF12-3)	23	TX	12/30/2014	Yes	No downstream
CP14-97	150 FERC 61,111; 154 FERC 61,233	Carolina Gas Transmission Corporation	0.2	SC	2/19/2015	No Analysis	No downstream
CP14-88, CP14-100	150 FERC 61,160; 154 FERC 61,184	Tennessee Gas Pipeline Company, L.L.C. Niagara Expansion Project	3.1	NY, PA	2/27/2015	No Analysis	No downstream
CP14-498	150 FERC 61,161; 155 FERC 61,018	Rockies Express Pipeline LLC Zone 3 East-to-West Project	0.2	IL, IN, OH	2/27/2015	No Analysis	No downstream
CP14-70	150 FERC 61,162	National Fuel Gas Supply Corporation West Side	23	PA	3/2/2015	No Analysis	No downstream

		Expansion and Modernization Project					
CP14-96	150 FERC 61,163; 157 FERC 61,011	Algonquin Gas Transmission, LLC (PF13-16) Algonquin Incremental Market (AIM) Project	37.6	CT, MA, NY, RI	3/3/2015	Yes	No downstream
CP14-112	150 FERC 61,181; 156 FERC 61,119	Empire Pipeline, Inc. /National Fuel Gas Corp (PF13-12) Tuscarora Lateral Project (see stge part)	17.1	NY, PA	3/10/2015	No	No downstream
CP14-504	150 FERC 61,205	Transcontinental Gas Pipe Line Co., LLC (PF14-3) Rock Springs Expansion Project	11.2	MD, PA	3/19/2015	No Analysis	No downstream
CP15-70	150 FERC 62,187	Regency Field Services LLC Beaver Residue Line (acquisition)	12.5	OK	3/23/2015	No EA	N/A (no EA)
CP13-553	151 FERC 61,012; 172 FERC 61,117	Cheniere Creole Trai Pipeline, L.P. (PF13-8) Liquefaction Exp and P/L Ext and Exp Proj (see Sab (CP13-552))	104.3	LA	4/6/2015	Unclear	No downstream
CP14-509, CP14-504	151 FERC 61,132	Paiute Pipeline Company (PF14-4) 2015 Elko Area Expansion Project	35.2	NV	5/14/2015	Yes	No downstream
CP14-522	151 FERC 61,118	Algonquin Gas Transmission, LLC (PF14-5) Salem Lateral Project	1.2	MA	5/14/2015	No Analysis	Downstream
CP15-104	152 FERC 62,056; 154 FERC 61,104	DBM Pipeline, LLC Ramsey Residue Line	9	TX	7/24/2015	No EA	No EA
CP14-496	152 FERC 61,138; 153 FERC 61,284	Dominion Transmission, Inc., Clarrington project	0.2	OH, WV	8/19/2015	No Analysis	No downstream
CP14-553	152 FERC 61,160; 155 FERC 61,099	Texas Gas Transmission, LLC Ohio-Louisiana Access Project	0	LA	8/28/2015	No Analysis	No downstream
CP15-109	152 FERC 61,214	Columbia Gulf Transmission, LLC (PF14-16)	34.1	LA	9/17/2015	Unclear	No downstream
CP15-24, CP15-22	153 FERC 61,074	Dominion Cove Point LNG, LP Keys Energy Project; Dominion Cove Point LNG,	0	MD, VA	10/20/2015	No Analysis	No downstream

		LP St. Charles Transportation Project					
CP15-29	153 FERC 61,077; 155 FERC 61,266	Transcontinental Gas Pipe Line Company, LLC Gulf Trace Proj (see Sabine Pass Liq/LNG/CP15-20)	7	LA	10/21/2015	No Analysis	No downstream
CP14-555	153 FERC 61,203; 155 FERC 61,234	Dominion Transmission, Inc. Lebanon West II Project	10.1	OH, PA	11/19/2015	No Analysis	No downstream
CP15-90	153 FERC 61,311; 155 FERC 61,195	Texas Eastern Transmission, LP Gulf Markets Expansion Project	0	KY, LA, MS, OH, TN, TX	12/17/2015	No Analysis	No downstream
CP15-523	153 FERC 61,310	American Midstream (Midla), LLC Natchez Pipeline Project	52.5	LA, MS	12/17/2015	No Analysis	No downstream
CP14-119	153 FERC 61,300; 155 FERC 61,328	Trunkline Gas Company, LLC (F12-8) Pipeline Modification Project (see Lake Charles LNG Company, LLC/CP14-120)	17.9	AR, LA, MS	12/17/2015	No	No downstream
CP15-7, CP15-87	153 FERC 61,382	Dominion Transmission, Inc. Monroe to Cornwall Project	0	WV	12/30/2015	No Analysis	No downstream
CP15-41- 000;001	153 FERC 61,381; 155 FERC 61,194	Equitrans, L.P. (PF14-15) Ohio Valley Connector Project	36.9	OH, WV	12/30/2015	No Analysis	No downstream
CP15-105	154 FERC 61,032	Texas Gas Transmission, LLC Western Kentucky Lateral Project	22.5	KY	1/21/2016	No Analysis	No downstream
CP14-554, CP15-16, CP15-17	154 FERC 61,080; 156 FERC 61,160; 162 FERC 61,233; 164 FERC 61,099	Florida Southeast Connection, LLC (PF14-2) FL Se Conn Proj (see Sabal Tr, Tran/Hillabee) Sabal Trail Transmission LLC (PF14-1) SE Mkt P/L Proj (see FL SE Conn, Tan/Hillabee) Transcontinental Gas Pipe Line Co., LLC (PF14-6) Hillabee Expansion Proj (see Sabal trail, FL Se Con)	126, 516.2, 43.5	AL, FL, GA	2/2/2016	Yes	No downstream

CP15-137	154 FERC 61,139	Rockies Express Pipeline LLC REX Zone 3 Capacity Enhancement Project	0	IN, OH	2/25/2016	No Analysis	No downstream
CP14-529	154 FERC 61,191; 160 FERC 61,027; 162 FERC 61,013; 165 FERC 61,170	Tennessee Gas Pipeline Company, L.L.C. Connecticut Expansion Project	13.3	CT, MA, NY	3/11/2016	Unclear	No downstream
CP15-505	154 FERC 61,220	Natural Gas Pipeline Company of America LLC Chicago Market Expansion Project	0	IL	3/17/2016	No Analysis	No downstream
CP15-513	154 FERC 61,235; 171 FERC 61,096	Texas Gas Transmission, LLC Northern Supply Access Project	0	IN, KY, LA, OH, TN	3/24/2016	No Analysis	No downstream
CP15-144	154 FERC 61,256	Florida Gas Transmission Company, LLC Jacksonville Expansion Project	8.7	FL	3/30/2016	No Analysis	No downstream
CP15-89	155 FERC 61,016; 157 FERC 61,095	Transcontinental Gas Pipe Line Company, LLC Garden State Expansion Project	0	NJ	4/7/2016	No Analysis	No downstream
CP15-102	155 FERC 61,019	Rockies Express Pipeline LLC Seneca Lateral Facilities Section 311 Conversion	14.7	OH	4/7/2016	No EA	No EA
CP15-8	155 FERC 61,026; 157 FERC 61,093; 177 FERC 61,046	Northwest Pipeline LLC Kalama Lateral Project	3.1	WA	4/11/2016	No Analysis	No downstream
CP14-511	155 FERC 61,033; 157 FERC 61,149	Kinder Morgan Louisiana Pipeline LLC Lake Charles Expansion Proj (see Magnolia LNG CP14-347)	1.3	LA	4/15/2016	Unclear	No downstream
CP14-497	155 FERC 61,106; 163 FERC 61,128	Dominion Transmission, Inc. New Market Project	0	NY	4/28/2016	No Analysis	No downstream
CP15-525	155 FERC 61,115; 155 FERC 61,326	UGI Sunbury, LLC (PF15-9) Sunbury Pipeline Project	34.4	PA	4/29/2016	No	Downstream
CP16-35	155 FERC 61,222	First Midstream, LLC	16.6	PA	6/1/2016	No EA	No EA
CP14-493	155 FERC 61,220	Southern Natural Gas Company, L.L.C. Zone 3 Expansion Project	3.3	AL, GA	6/1/2016	No Analysis	No downstream

CP14-115	155 FERC 61,219; 157 FERC 61,195	Elba Express Company, L.L.C. (PF13-3) see Elba Liquefaction/Southern LNG (CP14-103)	0	GA	6/1/2016	No	No downstream
CP15-504	155 FERC 61,231	Dominion Carolina Gas Transmission, LLC Columbia to Eastover Project	28	SC	6/2/2016	Yes	Better than alternative
CP15-517	155 FERC 61,287	Gulf South Pipeline Company, LP (PF15-4) Coastal Bend Header Project	66	TX	6/20/2016	Yes	No downstream
CP15-527	156 FERC 61,021	Transcontinental Gas Pipe Line Company, LLC NY Bay Expansion Project	0.2	NJ, NY, PA	7/7/2016	No Analysis	No downstream
CP15-118	156 FERC 61,022	Transcontinental Gas Pipe Line Company, LLC Virginia Southside Expansion Project II	4.3	NC, SC, VA	7/7/2016	No Analysis	No downstream
CP15-18- 000;001	156 FERC 61,054	Eastern Shore Natural Gas Company White Oak Mainline Expansion Project	5.4	PA	7/21/2016	No Analysis	No downstream
CP15-117	156 FERC 61,092	Transcontinental Gas Pipe Line Co., LLC (PF14-10) Dalton Expansion Project	115	GA, NC, VA	8/3/2016	Yes	No downstream
CP15-492	156 FERC 61,140; 158 FERC 61,029	Dominion Transmission, Inc. Leidy South Project	0.2	MD, PA, VA	8/29/2016	No Analysis	Downstream
CP15-77	156 FERC 61,157; 163 FERC 61,190	Tennessee Gas Pipeline Company, L.L.C. Broad Run Expansion Project	0	KY, TN. WV	9/6/2016	Yes	No downstream
CP15-148	156 FERC 61,156; 163 FERC 61,129	Tennessee Gas Pipeline Company, L.L.C. Susquehanna West Project	8.1	PA	9/6/2016	No Analysis	No downstream
CP16-27	156 FERC 61,159	Paulsboro Natural Gas Company LLC	2.6	PA	9/7/2016	No Analysis	No Analysis
CP16-17	157 FERC 61,096; 161 FERC 61,194; 163 FERC 61,009	Millennium Pipeline Company, L.L.C. (PF15-23) Valley Lateral Project	7.8	NY	11/9/2016	No	No downstream

CP16-12	157 FERC 61,208	Tennessee Gas Pipeline Company, L.L.C. Southwest Louisiana Supply Project	3.8	LA	12/15/2016	No Analysis	No downstream
CP16-3	157 FERC 61,223; 161 FERC 61,226	Texas Eastern Transmission, LP (PF15-17) Access South/Adair Southwest/Lebanon Extension	15.8	KY, OH, MS	12/21/2016	No Analysis	Downstream
CP14-518	157 FERC 61,222	Golden Pass Pipeline LLC (PF13-14)	3	TX	12/21/2016	Yes	No downstream
CP15-520	157 FERC 61,254; 161 FERC 61,046	Tennessee Gas Pipeline Company, L.L.C. Triad Expansion Project	7	PA	12/30/2016	No Analysis	No downstream
CP15-539, CP15-514	158 FERC 61,046	Columbia Gulf Transmission, LLC Rayne Express Expansion	0	KY	1/19/2017	Yes	Downstream
CP16-9	158 FERC 61,061; 160 FERC 61,016; 161 FERC 61,255	Algonquin Gas Transmission, LLC & Maritimes & Northeast Pipeline, L.L.C. (PF15-12) Atlantic Bridge Project	6.3	CT, MA, NY	1/25/2017	Yes	Downstream
CP16-472	158 FERC 61,079	Northern Natural Gas Company (PF15-33) Northern Lights 2017 Expansion	4.8	MN	1/30/2017	No	Downstream
CP16-98	158 FERC 61,126	Dominion Carolina Gas Transmission, LLC (PF15-29) Transco to Charleston Project	60	SC	2/2/2017	Yes	Downstream
CP16-4	158 FERC 61,110; 162 FERC 61,167	Tennessee Gas Pipeline Company, L.L.C. Orion Project	12.9	PA	2/2/2017	No Analysis	Downstream
CP15-93, CP15-94, CP15-96	158 FERC 61,109; 161 FERC 61,244	Rover Pipeline LLC (PF14-14) Rover Pipeline Project (see Panhandle/CP15-94 and Trunkline/CP15-96)	511.5	OH, PA, WV	2/2/2017	Yes	Downstream
CP15-138	158 FERC 61,125; 161 FERC 61,250; 166 FERC 62,098	Transcontinental Gas Pipe Line Co., LLC (PF14-8) Atlantic Sunrise Project	196.5	MD, NC, PA, SC, VA	2/3/2017	Yes	Downstream

CP15-115	158 FERC 61,145; 164 FERC 61,084; 167 FERC 61,007	National Fuel Gas Supply Corp/Empire Pipeline, Inc. (PF14-18) Northern Access 2016 Project	99.8	NY, PA	2/3/2017	No	No downstream
CP16-473-000	160 FERC 62,001	Texas Eastern Transmission, LP Bayway Lateral Project	0.44	NJ	7/3/2017	Yes	Downstream
CP16-22, CP16-23, CP16-24, CP16-102	160 FERC 61,022; 163 FERC 61,074; 164 FERC 61,054; 168 FERC 62,058; 172 FERC 61,199	NEXUS Gas Transmission, LLC, Texas Eastern Transmission, LP, Nexus Project	255.9	MI, OH OH	8/25/2017	Yes	Downstream
CP16-493	160 FERC 61,049	Columbia Gas Transmission, LLC, Central Virginia Connector	0.12	VA	9/6/2017	No Analysis	Downstream
CP17-28	161 FERC 61,014	Eastern Shore Natural Gas Company, 2017 Expansion	39.6	DE, PA, MD	10/4/2017	No Analysis	Downstream
CP16-478	161 FERC 61,032	Gulf South Pipeline Company, LP, St. Charles Parish Expansion	0.17	LA	10/6/2017	Yes	Downstream
CP16-10, CP16-13	161 FERC 61,043; 163 FERC 61,099; 172 FERC 61,193	Mountain Valley Pipeline LLC, Equitrans, L.P. Mountain Valley, and Equitrans Expansion	301	VA, WV PA, WV	10/13/2017	Yes	Downstream
CP15-554-000, CP15-554-001, CP15-555-000, CP15-556-000	161 FERC 61,042; 163 FERC 61,098; 164 FERC 61,100	Atlantic Cost Pipeline, LLC (PF15-6) Atlantic Coast Pipeline Project	564.1	NC, VA, WV	10/13/2017	Yes	Downstream
CP17-9	161 FERC 61,132	ANR Pipeline Company, Wisconsin South Expansion	0.54	IL, WI	11/2/2017	No Analysis	Downstream
CP16-488	161 FERC 61,149	Natural Gas Pipeline Company of America LLC, Gulf Coast Expansion Project	0.76	TX	11/8/2017	No Analysis	Downstream

CP16-38	161 FERC 61,200	Columbia Gas Transmission, LLC, WB Xpress	29.2	VA, WV	11/17/2017	Unclear	Downstream
CP17-22	161 FERC 61,205; 178 FERC 61,057	Kinder Morgan Louisiana Pipeline LLC, Sabine Pass Expansion	1.57	LA	11/20/2017	No Analysis	No downstream
CP16-494	161 FERC 61,214; 165 FERC 61,154; 168 FERC 61,196	Transcontinental Gas Pipe Line Company, LLC, Gulf Connector Expansion	0	TX	11/21/2017	No Analysis	Downstream
CP17-464	161 FERC 62,145	Rover Pipeline LLC, Majorsville Compressor 3	0	WV	11/28/2017	No Analysis	Downstream
CP16-486	161 FERC 61,229; 164 FERC 61,039	Millennium Pipeline Company, L.L.C., Eastern System Upgrade	7.8	NY	11/28/2017	No	Downstream
CP16-496	161 FERC 61,265; 165 FERC 61,217	Tennessee Gas Pipeline Company, L.L.C., Lone Star Project	0	TX	12/15/2017	Yes	No downstream
CP16-357, CP16-361-000	161 FERC 61,314; 164 FERC 61,137; 170 FERC 61,246	Columbia Gas Transmission, LLC, Columbia Gulf Transmission, LLC, Mountaineer/Gulf Xpress	170.1	WV, KY, MS, TN	12/29/2017	Yes	Downstream
CP17-58	162 FERC 61,050	Transcontinental Gas Pipe Line Company, LLC, St. James Supply Project	0.72	LA	1/18/2018	No Analysis	No downstream
CP15-558	162 FERC 61,053; 164 FERC 61,098	PennEast Pipeline Company, LLC, PennEast Pipeline	118.1	NJ, PA	1/19/2018	Yes	Downstream
CP17-15	162 FERC 61,056; 164 FERC 61,102; 168 FERC 61,081	Dominion Energy Cove Point LNG, LP, Eastern Market Access	0	MD, VA	1/23/2018	Yes	Downstream
CP17-257	162 FERC 61,126	WBI Energy Transmission, Inc., Valley Expansion Project	37.3	MN, ND	2/15/2018	No	Downstream
CP17-46	162 FERC 61,122	Southern Natural Gas Company, L.L.C., Fairburn Expansion Project	26.2	GA	2/15/2018	No Analysis	Downstream
CP17-26, CP15-499-000	162 FERC 61,119	Texas Eastern Transmission, LP, South Texas Expansion, Pomelo Connector, LLC, Pomelo Connector Pipeline	14	TX	2/15/2018	No Analysis	No downstream

CP17-409, PF17-1	162 FERC 61,238	DTE Midstream Appalachia, LLC, Birdsboro Pipeline Project	13.19	PA	3/15/2018	Yes	Downstream
CP17-8	163 FERC 61,017	Florida Gas Transmission Company, LLC, East-West Project	24.7	LA, TX	4/5/2018	No Analysis	Downstream
CP17-56, CP17-57	163 FERC 61,020	Brazoria Interconnector Gas Pipeline LLC, Texas Eastern Transmission, LP, Stratton Ridge Expansion Project	0.5	TX	4/6/2018	Yes	Downstream
CP17-471-000, PF17-2-000	163 FERC 62,096; 165 FERC 61,058	Paiute Pipeline Company Paiute 2018 Expansion Project	8.46	NV	5/15/2018	No Analysis	Downstream
CP17-476-000	163 FERC 61,124; 166 FERC 61,089; 172 FERC 61,192	Gulf South Pipeline Company, LP Westlake Expansion Project	0.3	LA	5/17/2018	No	Downstream
CP17-463-000	163 FERC 61,158	Florida Southeast Connection, LLC Okeechobee Lateral	5.2	FL	5/30/2018	No Analysis	Downstream
CP18-10-000	164 FERC 61,037	Texas Eastern Transmission, LP TX-LA Markets Project	0	LA, TX	7/19/2018	No Analysis	Downstream
CP17-80	164 FERC 61,036; 170 FERC 61,247	Columbia gas Transmission, LLC, Eastern Panhandle Expansion Project	3.37	PA, WV	7/19/2018	Unclear	Downstream
CP17-40-000, CP17-40-001	164 FERC 61,085; 169 FERC 61,074; 169 FERC 61,134	Spire STL Pipeline LLC, Spire STL Pipeline	65	IL, MO	8/3/2018	Yes	Downstream
CP18-108-000	164 FERC 61,091	Florida Southeast Connection, LLC, Acquisition of Riviera Lateral	38	FL	8/6/2018	No EA	No EA
CP17-490-000	164 FERC 61,101	Transcontinental Gas Pipe Line Company, Rivervale South to Market Project	0.61	NJ	8/10/2018	Yes	Downstream
CP17-458-000, PF17-03-000	164 FERC 61,103; 168 FERC 61,147; 170 FERC 61,137	Cheniere Midstream Holdings, Inc., Midship Pipeline Company, LLC, Midcontinent Supply Header Interstate Pipeline Project	233.3	OK	8/13/2018	Yes	No downstream

CP18-37-000, CP18-38-000	165 FERC 61,001; 165 FERC 61,138	Sierrita Gas Pipeline LLC, Compressor Expansion Project, Presidential Permit Amendment	0	AZ	10/1/2018	Yes	No downstream
CP18-251-000	165 FERC 61,049	Portland Natural Gas Transmission System, Presidential Permit Amendment	0	NH, ME, MA	10/26/2018	No EA	No EA
CP18-479-000	165 FERC 62,092	Portland Natural Gas Transmission System, Phase II of the Portland Xpress Project	0	MA, ME	11/13/2018	No EA	No EA
CP18-26-000	165 FERC 61,132	Texas Eastern Transmission, LP, Lambertville East Expansion Project	0	NJ	11/16/2018	No	No downstream
CP18-6-000	165 FERC 61,218; 168 FERC 61,004	RH energytrans, LLC, Risberg Line Project	59.9	PA, OH	12/7/2018	Yes	No downstream
CP18-18-000	165 FERC 61,221; 167 FERC 61,075; 171 FERC 61,032	Transcontinental Gas Pipe Line Company, Gateway Expansion Project	0	NJ	12/12/2018	No Analysis	No downstream
CP15-550-000, CP15-551-000, CP15-551-001, PF15-2-000	166 FERC 61,144	Venture Global Calcasieu Pass, LLC, TransCameron Pipeline, LLC, Venture Global Calcasieu Pass LNG Terminal and Pipeline Project, TransCameron Pipeline Project, Venture Global Calcasieu Pass LNG Terminal	42.7	LA	2/21/2019	Yes	No downstream
CP18-506-000	166 FERC 61,134	Portland Natural Gas Transmission System, Portland Xpress Project Phase III	0	MA, ME	2/21/2019	No Analysis	No downstream
CP18-534, PF18-1-000	166 FERC 61,136	Northern Natural Gas Company, Northern Lights 2019 and Rochester Expansion Projects	31.3	MN	2/21/2019	Yes	Downstream
CP18-89-000	166 FERC 61,172	Empire Pipeline, Inc., Empire North Project	0	PA, NY	3/7/2019	No	No downstream

CP17-117-000, CP17-118-000, PF16-006-000	167 FERC 61,054	Driftwood LNG LLC, Driftwood LNG Pipeline LLC, Driftwood Pipeline LLC, Driftwood LNG, Driftwood Pipeline	96	LA	4/18/2019	Unclear	No downstream
CP17-20, CP17-21, CP17-21-001, CP18-07, PF15-18, PF15-19, PF17-05	167 FERC 61,052	Port Arthur LNG, LLC, Port Arthur Pipeline, LLC, PALNG Common Facilities Company, LLC; Liquefaction Project, Pipeline Facilities Project, Louisiana Connector Project	169.85	LA, TX	4/18/2019	Yes	No downstream
CP17-101-000, PF16-05	167 FERC 61,110; 171 FERC 61031	Transcontinental Gas Pipe Line Company; Northeast Supply Enhancement Project	37.09	NJ, NY, PA	5/3/2019	Yes	No downstream
CP19-32-000	168 FERC 62,004	Portland Natural Gas Transmission System, Westbrook Xpress	0	NH, ME	7/2/2019	No EA	No EA
CP18-525-000	168 FERC 61,036	Gulf South Pipeline Company, LP, Willis Lateral Project	19	TX	7/18/2019	No Analysis	Downstream
CP18-102-000, CP18-103-000	168 FERC 61,180	Cheyenne Connector, LLC, Rockies Express Pipeline LLC, Cheyenne Connector Pipeline Project	70.00	CO	9/20/2019	Yes	No downstream
CP18-487-000	168 FERC 61205	Natural Gas Pipeline Company of America, SPL Project	0.00	LA	9/30/2019	No Analysis	No downstream
CP17-66-000, CP17-67-000, PF15-27-000	168 FERC 61,204	Venture Global Plaquemines LNG, LLC, Venture Global Gator Express, LLC, Gator Express, Plaquemines LNG	26.80	LA	9/30/2019	Yes	No downstream
CP19-52-000	169 FERC 61,050	Natural Gas Pipeline Company of America, Lockridge Extension Project	16.84	TX	10/17/2019	No Analysis	No downstream

CP18-538	169 FERC 61,020	Sendero Carlsbad Gateway, LLC, Limited Jurisdiction Certificate	23.28	NM, TX	10/10/2019	No Analysis	No downstream
CP18-512, CP18-513, PF15-26	169 FERC 61,135	Cheniere Corpus Christi Pipeline, L.P., Corpus Christi Liquefaction, LLC, Corpus Christi Liquefaction Stage III, L, Stage 3 LNG Facilities, Stage 3 Pipeline	21	TX	11/22/2019	Yes	No downstream
CP18-186	169 FERC 61,051	Transcontinental Gas Pipe Line Company, southeastern Trail Project	7.72	VA, SC, GA, LA	10/17/2019	No Analysis	No downstream
CP18-332	169 FERC 61,133	El Paso Natural Gas Company, L.L.C., South Mainline Expansion Project	17	AZ, NM, TX	11/21/2019	Yes	Downstream
CP16-454, CP16-455, PF15-20	170 FERC 61,046; 169 FERC 61,131	Rio Bravo Pipeline Company, LLC, Rio Grande LNG, LLC, Rio Bravo Pipeline Company LLC, Rio Grande LNG Terminal and Pipeline System Project, Rio Grande LNG Terminal, Rio Bravo Pipeline Project	139.4	TX	11/22/2019	Yes	No downstream
CP19-26	169 FERC 61,229	Dominion Energy Transmission, Inc., West Loop Project	5.1	PA, OH	12/19/2019	No Analysis	Downstream
CP19-7	169 FERC 61,230; 170 FERC 61142	Tennessee Gas Pipeline Company, L.L.C., 261 Upgrade Projects	2.1	CT, MA	12/19/2019	Unclear	No downstream
CP18-548	169 FERC 61,228	Eastern Shore Natural Gas Company, Del-Mar Energy Pathway Project	19.47	MD, DE	12/19/2019	Unclear	Downstream
CP18-46	169 FERC 61220; 171 FERC 61049	Adelphia Gateway, LLC, Adelphia Gateway Pipeline	4.75	PA, DE	12/20/2019	Yes	Downstream
CP17-495-000, CP17-494-000	170 FERC 61202; 171 FERC 61095	Jordan Cove Energy Project L.P. Pacific Connector Gas Pipeline, LP	229	OR	03/19/2020	Yes	No downstream

CP19-14-000, PF18-4-000	171 FERC 61,232; 172 FERC 62100	Mountain Valley Pipeline, LLC/Southgate Project	73	NC, VA	6/18/2020	Yes	No downstream
CP19-484-000	172 FERC 61,259	Kinder Morgan Louisiana Pipeline LLC/Acadiana Project		LA	9/17/2020	Yes	No downstream
CP19-488-000	172 FERC 61,260	Columbia Gulf Transmission, LLC/Louisiana Xpress Project		LA	9/17/2020	Yes	No downstream
CP19-491-000, CP19-494-000, PF17-10-000, PF19-1-000	172 FERC 61,039	National Fuel Gas Supply Corporation, Transcontinental Gas Pipe Line Company/FM100 Project, Leidy South Project	43.11	PA	7/17/2020	Yes	No downstream
CP19-495-000, PF18-6-000	173 FERC 61,074; 172 FERC 62015	Summit Permian Transmission, LLC, Double E Pipeline, LLC/Double E Pipeline Project	132.9	NM, TX	10/15/2020	Yes	No downstream
CP19-512-000	171 FERC 61,227; 172 FERC 61139	Texas Eastern Transmission, LP/Cameron Extension Project	0.2	LA	6/18/2020	Yes	No downstream
CP19-517-000	171 FERC 61,228	Gulf South Pipeline Company, LLC/Lamar County Expansion Project	3.4	MS	6/18/2020	Yes	Downstream
CP20-8-000	171 FERC 61,233	ANR Pipeline Company/Grand Chenier XPress Project		LA	6/18/2020	Yes	No downstream
CP20-16-000	171 FERC 61,234	Portland Natural Gas Transmission System/Westbrook XPress Project Phases II and III		ME	6/18/2020	No Analysis	Downstream
CP20-436-000	172 FERC 62,184	Texas Eastern Transmission, LP/Appalachia to Market Project	0.8	PA	9/30/2020	No Analysis	No downstream
CP20-30-000	173 FERC 61,072	Texas Eastern Transmission, LP/Middlesex Extension Project	1.75	NJ	10/15/2020	Yes	No downstream

CP20-503-000, PF20-00001-000	175 FERC 61,146	Northern Natural Gas Company/Northern Lights 2021 Expansion	1.51	MN	5/20/2021	No	Downstream
CP20-486-000	175 FERC 61,147	Tuscarora Gas Transmission Company/Tuscarora XPress	0	NV	5/20/2021	No	Downstream
CP20-68-000, CP20-70-000, PF19-00003-000	175 FERC 61,183	Enable Gas Transmission, LLC, Enable Gulf Run Transmission, LLC/Gulf Run Pipeline, Line CP Modifications	134	LA, TX	6/1/2021	Yes	Downstream
CP20-52-000, CP20-52-001, PF19-00007-000	175 FERC 61,182	WBI Energy Transmission, Inc./North Bakken Expansion Project Amendment	92.5	ND	6/1/2021	Yes	Downstream
CP20-504-000	175 FERC 61238	Northern Natural Gas Company Lake City 1st Branch Line Abandonment and Capacity Replacement Project			6/21/2021	No Analysis	Downstream

Appendix B: Major Natural Gas Pipeline Projects Denied by FERC under the 1999 Policy Statement

The following table includes all major natural gas pipeline projects denied by FERC under its 1999 Policy Statement, dating from 2000 to 2021. The project list was assembled from a search of Westlaw’s database of FERC’s administrative decisions and guidance using the Boolean search ““order denying application! AND “public convenience and necessity””. I then limited the results to the date range of January 1, 2000, to December 31, 2021, and excluded results that were not denied under the approach outlined in FERC’s 1999 Policy Statement.

Docket No.	Certificate Decision(s)	Company/Project	Miles of Pipe	States	Denied Date	EJ Community? (Yes, No, No Analysis, No EA, Can't Access EA) ⁴	GHG Emissions (Downstream, No Downstream, No Analysis, No EA, Can't Access EA) ⁵
CP10-481-000	135 FERC 61,233; 139 FERC 61,033	Turtle Bayou Gas Storage Company, LLC	13.1	TX	06/16/2011	No Analysis	No Analysis
CP13-483-000; CP13-492-000	154 FERC 61,190; 157 FERC 61,194	Jordan Cove Energy Project	232	OR	03/11/2016	Yes	Downstream

⁴ This column tracks whether the project was sited in a low-income and/or minority community (known as an “environmental justice” (“EJ”) community). “Yes” means the project was sited in such a community; “No” means it was not; “No Analysis” means FERC either did not conduct an environmental justice analysis for the project at all or it concluded that the project had no environmental justice implications without including any information on whether environmental justice communities were present in the project area; “Unclear” means that FERC performed some analysis of the communities in the project area but it was not clear based on this analysis whether these communities satisfied the criteria for environmental justice communities; “No EA” means that FERC did not complete an environmental assessment for the project; and “Can’t Access EA” means that FERC (or another governmental agency) did complete an environmental assessment for the project but it is not accessible on the FERC docket.

⁵ This column tracks whether FERC calculated the greenhouse gas (“GHG”) emissions associated with the project. “Downstream” means that FERC calculated the greenhouse gas emissions associated with the downstream combustion of the gas proposed to be transported by the project; “No downstream” means that FERC did not calculate the downstream greenhouse gas emissions from the project, but it did calculate some set of other direct emissions, e.g., from the construction or operation of the project; “Better than alternative” means that FERC stated generally that the project’s greenhouse gas emissions from natural gas were better than alternative emissions from more carbon-dense fuels, e.g., coal, but did not calculate the project’s greenhouse emissions; “No Analysis” means that FERC did not calculate any greenhouse gas emissions associated with the project; “No EA” means that FERC did not complete an environmental assessment for the project; and “Can’t Access EA” means that FERC (or another governmental agency) did complete an environmental assessment for the project but it is not accessible on the FERC docket.

Appendix C: Examples of FERC's Public Convenience and Necessity Analysis Under the 1999 Policy Statement

FERC's reasoning in each of the certificate decisions from my database is remarkably consistent. To illustrate that, I have pulled a representative example here from the Tuscarora Gas Transmission Company pipeline project,⁶ and then included additional citations to other projects that repeat the same or very similar language.

In each decision, FERC begins with essentially the same boilerplate language setting forth FERC's summary of the 1999 Policy Statement:

The Certificate Policy Statement provides guidance for evaluating proposals to certificate new construction. The Certificate Policy Statement establishes criteria for determining whether there is a need for a proposed project and whether the proposed project will serve the public interest. The Certificate Policy Statement explains that, in deciding whether to authorize the construction of major new natural gas facilities, the Commission balances the public benefits against the potential adverse consequences. The Commission's goal is to give appropriate consideration to the enhancement of competitive transportation alternatives, the possibility of overbuilding, subsidization by existing customers, the applicant's responsibility for unsubscribed capacity, the avoidance of unnecessary disruptions of the environment, and the unneeded exercise of eminent domain in evaluating new pipeline construction.

Under this policy, the threshold requirement for applicants proposing new projects is that the applicant must be prepared to financially support the project without relying on subsidization from its existing customers. The next step is to determine whether the applicant has made efforts to eliminate or minimize any adverse effects the project might have on the applicant's existing customers, existing pipelines in the market and their captive customers, and landowners and communities affected by the construction of the new natural gas facilities. If residual adverse effects on these interest groups are identified after efforts have been made to minimize them, the Commission will evaluate the project by balancing the evidence of public benefits to be achieved against the residual adverse effects. This is essentially an economic test. Only when the benefits outweigh the adverse effects on economic interests will the Commission proceed to consider the environmental analysis where other interests are addressed.⁷

⁶ Tuscarora Gas Transmission Co., 175 FERC ¶ 61,147 (2021).

⁷ *Id.* at 61,944. This same language, with minor variations here or there, appears in essentially all of the 425 FERC decisions. Here is a selection of examples, one from each year dating back to 2000: ANR Pipeline Co., 171 FERC ¶ 61,233, 62,689 (2020); Gulf South Pipeline Co., LP, 168 FERC ¶ 61,036, 61,193–94 (2019); Transcon. Gas Pipe Line Co., LLC, 164 FERC ¶ 61,101, paras. 12–13 (2018); Millennium Pipeline Co., L.L.C., 161 FERC ¶ 61,229, paras. 12–13 (2017); Tennessee Gas Pipeline Co., L.L.C., 157 FERC ¶ 61,208, paras. 12–13 (2016); Dominion Transmission, Inc., 153 FERC ¶ 61,382, paras. 22–23 (2015); Transcon. Gas Pipe Line Co., LLC, 149 FERC ¶ 61,258, 62,676–77 (2014); Gas Transmission Nw., LLC, 142 FERC ¶ 61,186, 61,880 (2013); Columbia Gas Transmission, LLC, 138 FERC ¶ 61,205, 61,929 (2012); Questar Pipeline Co., 135 FERC ¶ 61,114, 61,659 (2011); Kern River Gas Transmission Co., 132 FERC ¶ 61,226, 62,266 (2010); Midcontinent Express Pipeline LLC, 128 FERC ¶ 61,253, 62,170–71 (2009), *modified*, 131 FERC ¶ 61,118 (2009); Rockies Express Pipeline LLC, 123 FERC ¶ 61,234, 62,434–45 (2008), *clarified*, 125 FERC ¶ 61,160 (2008); Nat. Gas Pipeline Co. of America, 120 FERC ¶ 61,050, 61,221 (2007); Vector Pipeline LP, 117 FERC ¶ 61,018, 61,088 (2006); N. Border Pipeline Co., 112 FERC ¶ 61,196, 62,027 (2005); Trunkline Gas Company, LLC, 108 FERC ¶ 61,251, 62,393–94 (2004); Dominion Transmission, Inc., 104 FERC ¶ 61,267, 61,870–71 (2003); S. Nat. Gas Co., 100 FERC ¶ 61,281, 62,212 (2002); E. Tennessee Nat. Gas Co., 97 FERC ¶ 61,032, 61,150–51 (2001); Transcon. Gas Pipe Line Corp., 91 FERC ¶ 61,180, 61,646–47 (2000).

The decisions then go on to find that the pipeline project will not be subsidized by existing customers and that any adverse effects of the project on customers, landowners, and the surrounding community are nonexistent or “minimal”:

Tuscarora’s proposal satisfies the threshold requirement that it financially support the project without relying on subsidization from its existing customers. The Commission has determined, in general, that where a pipeline proposes to charge incremental rates for expansion services that are higher than the company’s existing system rates, the pipeline satisfies the threshold requirement that the project will not be subsidized by existing shippers. Tuscarora is proposing a new incremental initial recourse rate that is higher than Tuscarora’s system rate to recover costs associated with the project. Accordingly, we find that the project has met the threshold no-subsidy requirement of the Certificate Policy Statement.

In addition, the project will have no adverse effect on service to Tuscarora’s existing customers because the project is designed to provide new incremental service while maintaining service to existing customers. Further, the project is not intended to replace existing transportation service on other pipelines and no pipelines or their captive customers have protested Tuscarora’s proposal. Therefore, we find that there will be no adverse impacts on existing customers and other pipelines or their captive customers.

The proposed project will also have minimal adverse impacts on landowners and surrounding communities. Tuscarora proposes to construct the project within the existing footprint of the Wadsworth Compressor Station, thereby limiting new disturbances to affected landowners. Tuscarora also states that there are no residences within one half mile of the project vicinity and the nearest noise sensitive area to the compressor station is approximately two miles away. Furthermore, no landowner has protested the proposal. Thus, we find that Tuscarora has taken sufficient steps to minimize adverse impacts on landowners and surrounding communities for the purposes of our consideration under the Certificate Policy Statement.⁸

In the vast majority of the decisions, FERC then concludes that the public benefits of the project outweigh any adverse effects because the applicant has a contract with someone who will transport gas along the pipeline:

The proposed project will enable Tuscarora to provide 15,000 Dth per day of incremental firm transportation service and Tuscarora has entered into a long-term precedent agreement with Southwest for 100% of the project’s capacity. Accordingly, we find that Tuscarora has demonstrated a need for the

⁸ *Tuscarora Gas Transmission Co.*, 175 FERC at 61,944–45. Again, this language is typical of FERC’s decisions; here is a selection of examples: *Portland Nat. Gas Transmission Sys.*, 171 FERC ¶ 61,234, 62,699 (2020); *Nat. Gas Pipeline Co. of America LLC*, 168 FERC ¶ 61,205, 62,212–13 (2019); *Portland Nat. Gas Transmission Sys.*, 165 FERC ¶ 62,092, 2018 WL 5982003, at *4–5 (2018); *ANR Pipeline Co.*, 161 FERC ¶ 61,132, paras. 12–15 (2017); *Golden Pass Products LLC*, 157 FERC ¶ 61,222, paras. 28–31 (2016); *American Midstream (Midla), LLC*, 153 FERC ¶ 61,310, paras. 13–17 (2015); *Questar Overthrust Pipeline Co.*, 149 FERC ¶ 62,018, 64,039 (2014); *Dominion Transmission, Inc.*, 144 FERC ¶ 61,182, 62,025 (2013); *Texas E. Transmission, LP*, 139 FERC ¶ 61,138, 62,068–69 (2012); *ETC Tiger Pipeline, LLC*, 134 FERC ¶ 61,084, 61,405 (2011); *Florida Gas Transmission Co. LLC*, 132 FERC ¶ 61,040, 61,261 (2010); *Transcon. Gas Pipe Line Co., LLC*, 129 FERC ¶ 62,070, 64,187–88 (2009); *Gulf Crossing Pipeline Co. LLC*, 123 FERC ¶ 61,100, 61,726–27 (2008); *Wyoming Interstate Co., Ltd.*, 121 FERC ¶ 61,054, 61,248 (2007); *Southern Star Cent. Gas Pipeline, Inc.*, 116 FERC ¶ 61,189, 61,814 (2006); *Rendezvous Gas Servs., L.L.C.*, 112 FERC ¶ 61,141, 61,792 (2005); *CenterPoint Energy Gas Transmission Co.*, 109 FERC ¶ 62,118, 64,222–23 (2004); *Dominion Transmission, Inc.*, 104 FERC ¶ 61,267, 61,871 (2003); *Iroquois Gas Transmission Sys., L.P.*, 99 FERC ¶ 61,261, 62,123–24 (2002); *Petal Gas Storage, L.L.C.*, 97 FERC ¶ 61,097, 61,517 (2001); *Transcon. Gas Pipe Line Corp.*, 91 FERC ¶ 61,180, 61,647–48 (2000).

Tuscarora Xpress Project and further, that the project will not have adverse economic impacts on existing shippers or other pipelines and their existing customers, and that the project's benefits will outweigh any adverse economic effects on landowners and surrounding communities.⁹

⁹ *Tuscarora Gas Transmission Company*, 175 FERC at ¶ 61,945; *see also, e.g., N. Nat. Gas Co.*, 175 FERC ¶ 61,146, 61,934–35 (2021) (“The proposed project will enable Northern to provide 45,693 Dth/d of incremental firm transportation service and Northern has entered into long-term agreements with three shippers for 100% of the project’s capacity. Accordingly, we find that Northern has demonstrated a need for the 2021 Expansion Project and further, that the project will not have adverse economic impacts on existing shippers or other pipelines and their existing customers, and that the project’s benefits will outweigh any adverse economic effects on landowners and surrounding communities.”); *Corpus Christi Liquefaction Stage III*, 169 FERC ¶ 61,135, 62,015 (2019) (“Cheniere Pipeline’s proposed pipeline will enable it to transport gas to CCL Stage III’s proposed Stage 3 LNG Project, where the gas will be liquefied for export. Cheniere Pipeline has executed a precedent agreement with CCL Stage III for 100 percent of the transportation service provided by the capacity of the proposed facilities. Based on the benefits that will result from the project, with no adverse impacts on Cheniere Pipeline’s existing customers and other pipelines and their captive customers and minimal impacts on landowners and surrounding communities, we find that Cheniere Pipeline’s proposal is consistent with the Certificate Policy Statement, and, as conditioned in this order, is required by the public convenience and necessity.”); *Texas E. Transmission, LP*, 165 FERC ¶ 61,132, 61,526–27 (2018) (“The proposed Lambertville East Expansion Project will enable Texas Eastern to provide 60,000 Dth/d of incremental firm transportation service for PSEG and Elizabethtown, which have executed 15-year precedent agreements for the full capacity created by the project. Based on the benefits the project will provide, the lack of adverse effects on existing customers and other pipelines and their captive customers, and the minimal adverse effects on landowners and surrounding communities, we find, consistent with the Certificate Policy Statement and section 7 of the NGA, that the public convenience and necessity require approval and certification of Texas Eastern’s proposal, subject to the environmental and other conditions in this order.”); *N. Nat. Gas Company*, 158 FERC ¶ 61,079, para. 14 (2017) (Northern’s proposed Northern Lights 2017 Project will enable it to provide 75,937 Dth per day of firm natural gas transportation service for residential, industrial, and commercial customers in its Market Area. Based on the benefits the project will provide, the lack of adverse effects on existing customers and other pipelines and their captive customers, and the minimal adverse effects on landowners and surrounding communities, the Commission finds that Northern’s proposal is consistent with the Certificate Policy Statement. Based on this finding and the environmental review, as discussed below, the Commission finds that the public convenience and necessity require approval and certification of Northern’s proposal under section 7 of the NGA, subject to the environmental and other conditions in this order.”); *Texas E. Transmission, LP*, 157 FERC ¶ 61,223, para. 17 (2016) (“The proposed projects will enable Texas Eastern to provide 622,000 Dth per day of firm transportation service for customers that signed precedent agreements for the total capacity of all three projects. Based on the benefits the projects will provide and the minimal adverse effect on existing customers, other pipelines and their captive customers, and landowners and surrounding communities, we find, consistent with the Certificate Policy Statement and NGA section 7(c), that the public convenience and necessity requires approval of Texas Eastern’s proposals, as conditioned in this order.”); *Dominion Transmission, Inc.*, 153 FERC ¶ 61,382, para. 27 (2015) (“The Monroe to Cornwell Project will enable Dominion to provide 205,000 Dth per day of firm transportation service to Columbia, which has signed a precedent agreement for long-term service. Based on the benefits the project will provide, the minimal adverse impacts on Dominion’s existing customers and other pipelines and their captive customers, and the minimal impacts on landowners and surrounding communities, the Commission finds, consistent with the criteria discussed in the Certificate Policy Statement and subject to the environmental discussion below, that the public convenience and necessity requires approval of Dominion’s proposal, as conditioned in this order.”); *Corpus Christi Liquefaction, LLC*, 149 FERC ¶ 61,283, 62,897 (2014) (“The proposed facilities will enable Cheniere Pipeline to transport gas to and from Corpus Christi Liquefaction’s proposed LNG terminal. Corpus Christi Liquefaction has subscribed to 100 percent of the capacity of the proposed facilities. Based on the benefits the project will provide and the minimal adverse impacts on existing customers, other pipelines and their customers, and landowners and surrounding communities, we find, consistent with the Certificate Policy Statement and section 7(c) of the NGA, that Cheniere Pipeline’s proposal, as conditioned below, is required by the public convenience and necessity.”); *Gulf*

FERC often completes the analysis described above in less than a page, although it will give a more fulsome discussion where opponents of the project have made specific objections to the project’s adverse consequences or public benefits.¹⁰

FERC then summarizes the environmental impacts of the project—drawn mostly from an environmental assessment or environmental impact statement compiled pursuant to the National Environmental Policy Act¹¹ (“NEPA”)—and, in every decision I reviewed except for the two pipeline projects that were rejected, concludes that the projects are environmentally acceptable actions and the public convenience and necessity requires their approval.¹²

Crossing Pipeline Co. LLC, 144 FERC ¶ 61,196, 62,089 (2013) (“The proposed project will enable Gulf Crossing to provide 125,000 Dth per day of natural gas service to the Panda Sherman Power Plant I. Based on the benefits the project will provide and the minimal adverse effect on existing customers, other pipelines and their captive customers, and landowners and surrounding communities, the Commission finds, consistent with the Certificate Policy Statement and subject to the environmental conditions discussed below, that the public convenience and necessity requires approval of Gulf Crossing’s proposal, as conditioned in this order.”); Tennessee Gas Pipeline Co., L.L.C., 140 FERC ¶ 61,120, 61,595 (2012) (“Tennessee has entered into long-term precedent agreements for 100 percent of the design capacity of the project. Based on the benefits Tennessee’s proposal will provide to the project shippers, the lack of adverse effects on existing customers and other pipelines and their captive customers, and the minimal adverse effects on landowners or communities along the route, we find that Tennessee’s proposed MPP Project is consistent with the Certificate Policy Statement and required by the public convenience and necessity, as conditioned in this order.”); Empire Pipeline, Inc., 135 FERC ¶ 61,163, 61,946 (2011) (“Empire has entered into precedent agreements for all of the firm transportation service to be made available by the Tioga Extension Project. Based on the benefits the proposal will provide, and the lack of any identifiable adverse impacts on existing customers, other pipelines, landowners, and communities, the Commission finds, consistent with the Certificate Policy Statement and NGA section 7(c), that approval of the Tioga County Extension Project is required by the public convenience and necessity, subject to the conditions discussed below.”); Transcon. Gas Pipe Line Co., LLC, 130 FERC ¶ 61,019, 61,083 (2010) (“Based on the benefits Transco’s proposal will provide to the project shippers, the lack of adverse effects on existing customers and other pipelines and their captive customers, and the minimal adverse effects on landowners or communities[] along the route, the Commission finds that Transco’s proposed Bayonne Lateral is consistent with the Certificate Policy Statement and required by the public convenience and necessity, as conditioned in this order.”).

¹⁰ See, e.g., Mountain Valley Pipeline, LLC, 171 FERC ¶ 61,232, 62,636–42 (2020); Transcon. Gas Pipe Line Co., LLC, 165 FERC ¶ 61,221, paras. 14–23 (2018); Transcon. Gas Pipe Line Company, LLC, 158 FERC ¶ 61,125, paras. 20–33 (2017). Some of FERC’s earlier decisions under the Policy Statement appeared to more routinely engage in longer discussions of the adverse effects and public benefits of projects. See, e.g., N. Border Pipeline Co., 90 FERC ¶ 61,263, 61,874–81 (2000); Trans-Union Interstate Pipeline, L.P., 92 FERC ¶ 61,066, 61,219–22 (2000).

¹¹ National Environmental Policy Act, Pub. L. No. 91-190, 83 Stat. 852 (1970) (codified as amended in scattered sections of 42 U.S.C.).

¹² *Tuscarora Gas Transmission Company*, 175 FERC at 61,948 (“Based on our Certificate Policy Statement determination and our environmental analysis, we find under section 7 of the NGA that the public convenience and necessity requires approval of the Tuscarora XPress Project, subject to the conditions in this order.”); see also, e.g., *ANR Pipeline Company*, 171 FERC ¶ 61,233, 62,693 (2020) (“Based on our Certificate Policy Statement determination and our environmental analysis, we find under section 7 of the NGA that the public convenience and necessity requires approval of ANR’s Grand Chenier XPress Project, subject to the conditions of this order.”); *Venture Global Plaquemines LNG, LLC*, 168 FERC ¶ 61,204, 62,194 (2019) (“We agree with the conclusions presented in the final EIS and find that the projects, if constructed and operated as described in the final EIS, is an environmentally acceptable action. Further, for the reasons discussed throughout the order, as stated above, we find that the Plaquemines LNG Project is not inconsistent with the public convenience and necessity, and that the Gator Express Pipeline Project is in the public convenience and necessity.”); *Midship Pipeline Co., LLC*, 164 FERC ¶ 61,103, para. 97 (2018) (“Based on our consideration of this information and the discussion above, we agree with the conclusions presented in the final EIS and

Appendix D: Approved Major Pipeline Projects Involving Affiliate Precedent Agreements

The following table lists all major pipeline projects approved by FERC (as listed in Appendix A) that contained at least one affiliate precedent agreement. FERC often does not specify whether a precedent agreement is with an affiliate or not, so this list does not necessarily represent all such projects. Additionally, this list includes projects where the applicant submitted multiple precedent agreements, some of which were with affiliates and others of which were not (these projects are labeled “mixed” in the table).

Docket No.	Certificate Decision(s)	Company/Project	Miles of Pipe	States	Issued Date	Mixed? (Yes or No)
CP00-47	92 FERC 61,066; 93 FERC 61,115	Florida Gas Transmission Company (Phase IV Expansion)	41.7	AR, LA	8/1/2000	No
CP00-36	94 FERC 61,269; 91 FERC 61,285	Guardian Pipeline, L.L.C.	149	IL, WI	3/14/2001	Yes
CP00-68	95 FERC 61,404; 93 FERC 61,279	Questar Pipeline Company (Mainline 104 Project)	75.6	UT	6/14/2001	Yes

find that the project, if constructed and operated as described in the final EIS, is an environmentally acceptable action. Further, for the reasons discussed throughout the order, as stated above, we find that the project is in the public convenience and necessity.”); Columbia Gas Transmission, LLC, 161 FERC ¶ 61,314, para. 125 (2017) (“Based on our consideration of this information and the discussion above, we agree with the conclusions presented in the final EIS and find that the projects, if constructed and operated as described in the applications, supplemental filings, and the final EIS, as modified above, is an environmentally acceptable action. Further, for the reasons discussed throughout the order, as stated above, we find that the projects are in the public convenience and necessity.”); Dominion Transmission, Inc., 156 FERC ¶ 61,140, para. 111 (2016) (“We have reviewed the information and analysis contained in the EA regarding potential environmental effects of the Leidy South Project. Based on our consideration of this information and the discussion above, we agree with the conclusions presented in the EA and find that the project, if constructed and operated as described in the EA, is an environmentally acceptable action.”); Algonquin Gas Transmission, LLC, 150 FERC ¶ 61,163, 62,108 (2015) (“We have reviewed the information and analysis contained in the final EIS regarding potential environmental effects of the AIM Project. Based on our consideration of this information and the discussion above, we agree with the conclusions presented in the final EIS and find that the project, if constructed and operated as described in the final EIS, is an environmentally acceptable action.”); Corpus Christi Liquefaction, LLC, 149 FERC ¶ 61,283, 62,911 (2014) (“We have reviewed the information and analysis contained in the record, including the final EIS, regarding the potential environmental effects of the Liquefaction and Pipeline Projects. Based on our consideration of this information and the discussion above, we agree with the conclusions presented in the final EIS and find that approval of the proposed facilities, if constructed and operated as described in the final EIS, is an environmentally acceptable action.”); Texas E. Transmission, LP, 139 FERC ¶ 61,138, 62,085 (2012) (“We have reviewed the information and analysis contained in the final EIS regarding potential environmental effects of the project. Based on our consideration of this information and the discussion above, we agree with the conclusions presented in the final EIS and find that the proposed NJ-NY Project, if constructed and operated as described in the final EIS and the application, as supplemented, is an environmentally acceptable action.”); Kern River Gas Transmission Co., 132 FERC ¶ 61,226, 62,271 (2010) (“The Commission has reviewed the information and analysis contained in the final EIS regarding potential environmental effects of the project. Based on the consideration of this information and the discussion above, the Commission agrees with the conclusions presented in the final EIS and finds that the Apex Expansion, if constructed and operated as described in the final EIS, is an environmentally acceptable action.”).

CP03-18	103 FERC 61,150	City of Duluth Public Works & Utilities	5.3	MN, WI	5/7/2003	No
CP03-31	104 FERC 61,078	Paiute Pipeline Company	14.5	NV	7/14/2003	No
CP01-409	106 FERC 61,273; 103 FERC 61,106; 137 FERC 61,098	Calypso U.S. Pipeline, LLC Calypso Pipeline Project (LNG/Bhms)	41.8	FL	3/24/2004	No
CP04-38	109 FERC 61,324	Cheniere Sabine Pass Pipeline Co. (see CP04-47) (transports Sabine Pass LNG, L.P. 2,600 MMcf/d)	16	LA	12/21/2004	No
CP04-44	111 FERC 61,081; 139 FERC 61,195	Cheniere Corpus Christi Pipeline Company (transports Corpus Christi LNG, L.P.'s 2,600 MMcf/d)	24	TX	4/18/2005	No
CP04-41	112 FERC 61,070; 136 FERC 61,015	Mill River Pipeline, LLC (transports Weaver's Cove's 800 MMcf/d)	6.1	MA	7/15/2005	No
CP05-76	113 FERC 61,064; 114 FERC 61,039	Dominion South Pipeline Co., LP	0.1	TX	10/20/2005	No
CP06-76, CP98-150, CP06-5, CP02-31	117 FERC 61,319; 116 FERC 61,074; 119 FERC 61,173	Algonquin Gas Transmission Co. (PF06-5) Ramapo Expansion Project; Millennium Pipeline Company, L.P. (Company, L.L.C./CP98-150-008); Empire Pipeline, Inc. (PF04-16) Empire Connector Project; Iroquois Project; Columbia Gas Transmission Corporation	4.8; 181.7; 78; 0; 8.8	CT, NJ, NY	12/21/2006	Yes
CP07-457	122 FERC 61,242	Iroquois Gas Transmission System, L.P. 08/09 Expansion Project	84	NY, CT	3/20/2008	No
CP06-365, et al	124 FERC 61,257; 126 FERC 61,035; 128 FERC 61,216	Bradwood Landing LLC and Northern Star Energy/Bradwood Landing LNG	36.3	OR, WA	9/18/2008	No
CP09-36, CP09-40	128 FERC 61,198; 130 FERC 61,193	Southern Natural Gas Company South System Expansion III Project	81.1	GA, MS, AL	8/27/2009	Yes
CP09-415	129 FERC 61,136	Northwest Pipeline GP Sundance Trail Expansion Project	15.5	CO, WY	11/19/2009	No
CP07-191	129 FERC 61,199; 153 FERC 61,084	Port Dolphin Energy LLC/Port Dolphin Project	3.93	FL	12/3/2009	No
CP10-448	135 FERC 61,239; 136 FERC 61,031	Dominion Transmission, Inc. (PF09-15) Appalachian Gateway Project	107.4	PA, WV	6/16/2011	Yes

CP11-549	138 FERC 62,080; 156 FERC 61,008	DCP Midstream, LP LaSalle Residue Line Project	11	CO	2/6/2012	No
CP12-468	140 FERC 62,238; 143 FERC 61,043	Atlas Pipeline Mid-Continent WestTex, LLC Pioneer Natural Resources USA, Inc.	10.2	TX	9/28/2012	No
CP12-30	141 FERC 61,091; 143 FERC 61,132	Transcontinental Gas Supply Co., LLC (PF11-4) Northeast Supply Link Expansion	12.5	NJ, NY, PA	11/2/2012	Yes
CP12-351	142 FERC 61,137; 145 FERC 61,074	Cheniere Creole Trail Pipeline Co. Creole Trail Pipeline Expansion Project	0	LA	2/21/2013	No
CP13-509	145 FERC 62,229	DCP Midstream, LP Lucerne Residue Pipeline	7.6	CO	12/27/2013	No
CP14-101	149 FERC 61,022; 169 FERC 61,009	City of Clarksville, Tennessee (PF13-17)	20.8	KY, TN	10/9/2014	No
CP13-499	149 FERC 61,199; 169 FERC 61,102	Constitution Pipeline Company, LLC (PF12-9); Iroquois Gas Transmission System, LP (PF12-9) (see Constitution P/L/CP13-499)	124	NY, PA	12/2/2014	Yes
CP14-509, CP14-504	151 FERC 61,132	Paiute Pipeline Company (PF14-4) 2015 Elko Area Expansion Project	35.2	NV	5/14/2015	Yes
CP14-554, CP15-16, CP15-17	154 FERC 61,080; 156 FERC 61,160; 162 FERC 61,233; 164 FERC 61,099	Florida Southeast Connection, LLC (PF14-2) FL Se Conn Proj (see Sabal Tr, Tran/Hillabee) Sabal Trail Transmission LLC (PF14-1) SE Mkt P/L Proj (see FL SE Conn, Tan/Hillabee) Transcontinental Gas Pipe Line Co., LLC (PF14-6) Hillabee Expansion Proj (see Sabal trail, FL Se Con)	126, 516.2, 43.5	AL, FL, GA	2/2/2016	No
CP16-22, CP16-23, CP16-24, CP16-102	160 FERC 61,022; 163 FERC 61,074; 164 FERC 61,054; 168 FERC 62,058; 172 FERC 61,199; 174 FERC 62,068	NEXUS Gas Transmission, LLC, Texas Eastern Transmission, LP, Nexus Project	255.9	MI, OH OH	8/25/2017	Yes
CP16-10, CP16-13	161 FERC 61,043; 163 FERC 61,099; 172 FERC 61,193	Mountain Valley Pipeline LLC, Equitrans, L.P. Mountain Valley, and Equitrans Expansion	301	VA, WV PA, WV	10/13/2017	No

CP15-554-000, CP15-554-001, CP15-555-000, CP15-556-000	161 FERC 61,042; 163 FERC 61,098; 164 FERC 61,100	Atlantic Cost Pipeline, LLC (PF15-6) Atlantic Coast Pipeline Project	564.1	NC, VA, WV	10/13/2017	Yes
CP15-558	162 FERC 61,053; 164 FERC 61,098	PennEast Pipeline Company, LLC, PennEast Pipeline	118.1	NJ, PA	1/19/2018	Yes
CP17-46	162 FERC 61,122	Southern Natural Gas Company, L.L.C., Fairburn Expansion Project	26.2	GA	2/15/2018	Yes
CP17-471-000, PF17-2-000	163 FERC 62,096; 165 FERC 61,058	Paiute Pipeline Company Paiute 2018 Expansion Project	8.46	NV	5/15/2018	No
CP17-463-000	163 FERC 61,158	Florida Southeast Connection, LLC Okeechobee Lateral	5.2	FL	5/30/2018	No
CP17-40-000, CP17-40-001	164 FERC 61,085; 169 FERC 61,074; 169 FERC 61,134	Spire STL Pipeline LLC, Spire STL Pipeline	65	IL, MO	8/3/2018	No
CP17-458-000, PF17-03-000	164 FERC 61,103; 168 FERC 61,147; 170 FERC 61,137	Cheniere Midstream Holdings, Inc., Midship Pipeline Company, LLC, Midcontinent Supply Header Interstate Pipeline Project	233.3	OK	8/13/2018	Yes
CP15-550-000, CP15-551-000, CP15-551-001, PF15-2-000	166 FERC 61,144	Venture Global Calcasieu Pass, LLC, TransCameron Pipeline, LLC, Venture Global Calcasieu Pass LNG Terminal and Pipeline Project, TransCameron Pipeline Project, Venture Global Calcasieu Pass LNG Terminal	42.7	LA	2/21/2019	No
CP18-538	169 FERC 61,020	Sendero Carlsbad Gateway, LLC, Limited Jurisdiction Certificate	23.28	NM, TX	10/10/2019	No
CP16-454, CP16-455, PF15-20	170 FERC 61,046; 169 FERC 61,131	Rio Bravo Pipeline Company, LLC, Rio Grande LNG, LLC, Rio Bravo Pipeline Company LLC, Rio Grande LNG Terminal and Pipeline System Project, Rio Grande LNG Terminal, Rio Bravo Pipeline Project	139.4	TX	11/22/2019	No

CP17-495-000; CP17-494-000	170 FERC 61,202; 171 FERC 61,095	Jordan Cove Energy Project L.P. Pacific Connector Gas Pipeline, LP	229	OR	04/19/2020	No
CP19-491-000, CP19-494-000, PF17-10-000, PF19-1-000	172 FERC 61,039	National Fuel Gas Supply Corporation, Transcontinental Gas Pipe Line Company/FM100 Project, Leidy South Project	43.11	PA	7/16/2020	Yes
CP19-495-000, PF18-6-000	173 FERC 61,074; 172 FERC 62,015	Summit Permian Transmission, LLC, Double E Pipeline, LLC/Double E Pipeline Project	132.9	NM, TX	10/15/2020	Yes

Appendix E: FERC's Environmental Justice Analyses

This appendix assembles some additional examples of FERC's environmental justice analyses for applications for certificates of public convenience and necessity. The information is drawn from the FERC decisions in each of these cases, the environmental assessment or environmental impact statement that FERC composed pursuant to the National Environmental Policy Act for each project, and any relevant filings on the project docket.

1. *The Southern Trails Project*

The Southern Trails Project involved an application to convert a 693-mile crude-oil pipeline into a natural gas pipeline in order to provide transport from the "Four Corners" area of New Mexico, Arizona, Utah, and Colorado to markets in southern California.¹³ The environmental impact statement for the project observed that "[t]he counties through which the existing and proposed project components cross in Arizona, Utah, and New Mexico have large Native American populations."¹⁴ In fact, six counties had Native American populations greater than 20% (ranging from 28.6% to 77.2%), when the average percentage of Native Americans in Arizona was 5.2%, the average in Utah was 1.3%, and the average in New Mexico was 8.5%.¹⁵ The project crossed through several Native American reservations, including the Navajo Nation, the Hopi Reservation, and the Fort Mojave Indian Reservation.¹⁶ During the development of the EIS, the Hopi Tribe submitted comments expressing concern with the project:

The Hopi Tribe is a cooperating agency in the development of this Environmental Impact Statement because portions of this proposed project traverse lands that are within the boundaries of the Hopi Indian Reservation, and a major portion of the landscape affected by this proposed project is considered Hopi traditional lands. Specifically, within this project area the Hopi people have maintained, for close to a millennia, a very important cultural and religious relationship to specific places on the landscape that are represented by shrines, offering places, eagle collecting areas, traditional plant and mineral gathering areas, traditional hunting areas, places of pilgrimage destination, springs, trails, and places of ancestral habitation. It is because of this unique Hopi relationship to the landscape and a concern for protecting these important places from adverse impacts as a result of this proposed project that the Hopi Tribe is providing you with our comments on this draft Environmental Impact Statement. . . .

It is the position of the Hopi Tribe that at this time the Federal Energy Regulatory Commission has not received all the pertinent or best available information to describe the affected environment and to appropriately assess the environmental consequences of this proposed project. Specifically, the Federal Energy Regulatory Commission does not have the information concerning the potential effects of the project on places of traditional importance to the Hopi people. The Hopi Tribe is concerned that the conclusions reached in this document and the decision to authorize the project are premature, because this document has not identified nor considered all of the affected resources.¹⁷

¹³ Questar S. Trails Pipeline Co., 92 FERC ¶ 61,110, 61,407 (2000).

¹⁴ Final Environmental Impact Statement & Final Environmental Impact Report, Southern Trails Pipeline Project, Questar S. Trails Pipeline Co., FERC Docket No. CP99-163-000, at 4-40 (July 2000).

¹⁵ *Id.* at 4-41 tbl. 4-14.

¹⁶ *Id.* at 4-44, 5-64, 5-75-5-77.

¹⁷ The Hopi Tribe Comments on the Draft Environmental Impact Statement/Report, Questar S. Trails Pipeline Co., FERC Docket No. CP99-163 at 1 (Apr. 17, 2000), <https://perma.cc/632E-GN9X>.

The final EIS acknowledged that cultural surveys of the project area were not complete at the time of the assessment,¹⁸ and “[d]uring construction, significant cultural resources could be destroyed or damaged, have their character or settings changed, or their integrity diminished.”¹⁹ But, the EIS observed that the project applicant had proposed an “Unanticipated Discoveries Plan” that “outline[d] how cultural resources would be protected if encountered during construction,” and thus the EIS concluded that the project’s impact on Native American cultural resources could be mitigated to “less-than-significant levels.”²⁰

In its decision certifying the project, FERC stated that it had “reviewed the material provided in the EIS[], and determined that [its] approval of this project will not cause any community, minority, low-income population along any portion of the conversion and construction project to suffer a disproportionately high or adverse human health or environmental effect.”²¹ FERC acknowledged that cultural surveys had not been completed at the time of its decision, but assured that it would require the project applicant to “prepare and implement treatment plan(s) which provide for the mitigation of adverse effects” if any historic properties were identified that would be affected by the project.²² Moreover, FERC concluded that “[t]he most significant impact on Native Americans (whose lands are crossed by the existing pipeline and a portion of the TransColorado Extension) is that they will have access (for the Navajo Nation, additional access) to natural gas for domestic, commercial and perhaps industrial use.”²³

The Southern Trails Project was subsequently completed. In 2017, the project operator filed, and FERC later approved, a request to abandon the project because it had been operating at a financial loss for years.²⁴

2. Southeast Market Pipelines Project

The Southeast Market Pipelines Project involved three interrelated applications for pipeline construction in Alabama, Georgia, and Florida.²⁵ In total, the project involved approximately 690 miles of new pipeline construction and more than six new compressor stations, in addition to other related facilities.²⁶ The environmental impact assessment for the project concluded that it would be located “across or within 1 mile of” 135 environmental justice communities.²⁷ The

¹⁸ Final Environmental Impact Statement & Final Environmental Impact Report, Southern Trails Pipeline Project, *supra* note 14, at 4-40 (“To date, [the project applicant] has not completed surveys of numerous excavation sites. Other additional areas requiring survey also may be identified.”). From the cultural surveys that had been completed at the time of the publication of the EIS, the EIS determined that the project area encompassed more than a dozen cultural resource sites, including “prehistoric sites and components show[ing] evidence of multiple activities such as lithic reduction, food procurement and processing, and/or habitation. Historic components are primarily related to Navajo habitation.” *Id.* at 4-43.

¹⁹ *Id.* at ES-v.

²⁰ *Id.*

²¹ Questar S. Trails Pipeline Co., 92 FERC ¶ 61,110, 61,416 (2000).

²² *Id.* at 61,417.

²³ *Id.* at 61,416.

²⁴ Questar S. Trails Pipeline Co., 163 FERC ¶ 62,086, 2018 WL 2144336, at *1-2 (2018).

²⁵ Florida Se. Connection, LLC, 154 FERC ¶ 61,080, paras. 1-4 (2016), *rev'd on other grounds*, Sierra Club v. FERC, 867 F.3d 1357 (D.C. Cir. 2017), *order on remand reinstating certificate*, 162 FERC ¶ 61,233 (2018).

²⁶ *Id.*

²⁷ Southeast Markets Pipelines Project, Final Environmental Impact Statement Volume I, Florida Se. Connection, LLC, FERC Docket Nos. CP14-554, CP15-16, CP15-17, at 3-215 (Dec. 2015).

EIS found that “[a]pproximately 83.7 percent of the SMP Project would cross or be within 1 mile of census tracts that are considered environmental justice populations.”²⁸

In particular, one of the proposed compressor stations for the project was designated to be built in Dougherty County, Georgia.²⁹ Dougherty County is composed of 27 census tracts, 23 (or 85%) of which contain minority and/or low-income populations.³⁰ Of the 7 census tracts within one mile of the proposed compressor stations, five (71%) were minority and/or low-income communities.³¹ Specifically, the compressor station was located in the neighborhood of Albany, which is a majority African American neighborhood (although the surrounding neighborhood is majority White, which led the EIS not to designate the area as an environmental justice census tract³²). A letter submitted by Georgia’s congressional delegation explained that Dougherty County is already overburdened by pollution: it contains “259 hazardous-waste facilities, 78 air-polluting facilities, 20 toxic-polluting facilities, and 16 water-polluting facilities.”³³

The EIS acknowledged that “African Americans have one of the highest rates of current asthma compared to other racial/ethnic groups,” and therefore “it is reasonable to assume that, where African American populations are present, they have an increased risk of experiencing adverse impacts from decreased air quality.”³⁴

Nonetheless, the EIS found that the project would not have a disproportionately high or adverse impact on environmental justice communities.³⁵ The EIS said that it “compared the percentage of environmental justice populations affected by the project to the percentage of environmental justice populations that would be affected by the land-based major route alternatives”—i.e., other possible routes for the proposed pipeline—and found that “[b]ecause these route alternatives would affect a relatively similar percentage of environmental justice populations . . . the SMP Project would not disproportionately impact environmental justice populations.”³⁶ The EIS also found that the project would not have any high or adverse impacts.³⁷ It did not evaluate any of the cumulative impacts the project could have on Dougherty County, taking into account the area’s preexisting polluting infrastructure.³⁸

In its decision certifying the pipeline project, FERC agreed with the EIS that the project would not have any high or adverse impacts because no impact of the project would be “significant.”³⁹ It also agreed that any potential impacts “would be equally experienced by environmental justice populations as

²⁸ *Id.* at 3-216.

²⁹ *Id.* at 3-218.

³⁰ *Id.*

³¹ *Id.*

³² *See id.* at 3-219, 3-220; *Sierra Club v. FERC*, 867 F.3d 1357, 1370 (D.C. Cir. 2017).

³³ *Id.* at 1370.

³⁴ Southeast Market Pipelines Project, Final Environmental Impact Statement Volume 1, *supra* note 27, at 3-214.

³⁵ *Id.* at 3-216–3-218.

³⁶ *Id.* at 3-216, 3-217.

³⁷ *Id.*

³⁸ *See id.*; *see also Sierra Club v. FERC*, 867 F.3d 1357, 1370 (D.C. Cir. 2017).

³⁹ Florida Se. Connection, LLC, 156 FERC ¶ 61,160, para. 75 (2016) (order on rehearing).

non-environmental justice populations.”⁴⁰ And it found that because “the route alternative would affect a similar percentage of environmental justice populations as the proposed route,” there was no disproportionate impact on environmental justice communities.⁴¹

3. *Transco to Charleston Project*

The Transco to Charleston Project involved the construction of approximately 60 miles of pipeline and a new compressor station in eight counties in South Carolina.⁴² The environmental assessment for the project found that half of those counties qualified as environmental justice communities.⁴³ Moreover, the environmental assessment reviewed all of the census blocks crossed or affected by the project, and found that 83% of the census blocks qualified as environmental justice populations.⁴⁴ This included four census blocks that were majority African American communities with more than 40% of the population below the poverty level.⁴⁵

Yet the environmental assessment included only one paragraph discussing potential environmental justice impacts:

The Project was sited to avoid environmental impacts on the extent practicable, and was not sited based on socioeconomic conditions of local populations. Dominion would employ the same impact minimization and mitigation measures throughout the Project area regardless of the presence or absence of minority or low-income populations. These standards include noise mitigation measures and fugitive dust controls to avoid negatively impacting local communities. Dominion would ensure that trucks and construction equipment are transported in a manner that causes the least disruption to affected communities within the Project area. Overall there is no evidence that the Project would cause a disproportionate share of adverse environmental or socioeconomic impacts on any racial, ethnic, or socioeconomic group.⁴⁶

In its decision certifying the project, FERC did not mention the environmental justice analysis or potential environmental justice impacts at all.⁴⁷

4. *Atlantic Coast Pipeline Project*

The Atlantic Coast Pipeline involved an application to build a 604-mile-long interstate pipeline and related facilities running from West Virginia through Pennsylvania, Virginia, and North Carolina.⁴⁸ The Environmental Impact Statement (EIS) for the project identified multiple environmental justice

⁴⁰ *Id.*

⁴¹ *Id.*

⁴² Dominion Carolina Gas Transmission, LLC, 158 FERC ¶ 61,126, paras. 3–4 (2017).

⁴³ Transco to Charleston Project, Environmental Assessment, Dominion Carolina Gas Transmission, LLC, FERC Docket No. CP16-98, at 86 (Oct. 2016).

⁴⁴ *Id.* at 85.

⁴⁵ *Id.* at 86 tbl. B.5-2.

⁴⁶ *Id.* at 87.

⁴⁷ *See* Dominion Carolina Gas Transmission, LLC, 158 FERC ¶ 61,126, paras. 33–84 (2017).

⁴⁸ Atlantic Coast Pipeline, LLC, 161 FERC ¶ 61,042, paras. 1–2 (2017).

communities that fell within the project area: the pipeline would have crossed 36 census tracts that contained minority communities,⁴⁹ and 70 census tracts that contained low-income communities (out of 136 total census tracts affected by the project).⁵⁰ One component of the project, a compressor station designed to pump natural gas through the pipeline, was designated to be built in Buckingham County, Virginia, which the EIS identified as a low-income community.⁵¹

More precisely, the compressor station would have been built in Union Hill, which “is a historic community with a high population of African-Americans whose ancestors established the community in the aftermath of the Civil War.”⁵² Some of those residents are “known descendants of formerly enslaved people from area plantations.”⁵³ A study conducted by local residents of Union Hill “revealed a prevalence of health conditions consistent with national data showing higher rates of respiratory sickness among the African-American population.”⁵⁴ Residents reported suffering from asthma, chronic obstructive pulmonary disease, chronic bronchitis and pneumonia, heart disease, and other conditions “that would make them particularly susceptible to air pollution from the Compressor Station.”⁵⁵

The EIS recognized that the construction of the pipeline and compressor stations and operation of the compressor station would result in air pollutants, including carbon monoxide, carbon dioxide, methane, nitrous oxide, volatile organic compounds, and particulate matter.⁵⁶ The EIS acknowledged that these pollutants “are known to increase the effects of asthma,”⁵⁷ and that “increased rates of lung cancer were identified associated with the compounds emitted by compressor station operations.”⁵⁸ The EIS continued: “Studies have shown that several different cancer-related compounds and chemicals are present in the air in proximity to construction and operation of compressor stations, and that some of these have documented health effects on the general and vulnerable populations.”⁵⁹

Furthermore, the EIS observed:

Due to high rates of asthma within the overall African American community, we consider this community especially sensitive. . . . Thus, it is reasonable to assume that, where African American populations exceed the thresholds for

⁴⁹ Atlantic Coast Pipeline and Supply Header Project, Final Environmental Impact Statement Volume I, Atlantic Coast Pipeline, LLC, FERC Docket No. CP15-554, at 4-512 (July 2017).

⁵⁰ *Id.* at 4-512–4-513.

⁵¹ *Id.* at 4-513; *see also* Atlantic Coast Pipeline and Supply Header Project, Final Environmental Impact Statement Volume III pt. 2, Atlantic Coast Pipeline LLC, FERC Docket No. CP15-554, at Appendix U tbl. U-1.

⁵² *Friends of Buckingham v. State Air Pollution Control Bd.*, 947 F.3d 68, 85 (4th Cir. 2020).

⁵³ *Id.* at 86.

⁵⁴ *Id.*

⁵⁵ *Id.*

⁵⁶ Atlantic Coast Pipeline and Supply Header Project, Final Environmental Impact Statement Volume I, Atlantic Coast Pipeline, LLC, FERC Docket No. CP15-554, at 4-513 (July 2017).

⁵⁷ *Id.* (footnote omitted).

⁵⁸ *Id.* at 4-514.

⁵⁹ *Id.*

environmental justice populations identified in this analysis, those populations have an increased risk over Caucasian populations (and therefore disproportionate) of experiencing adverse effects from decreased air quality.”⁶⁰

The EIS also recognized that “low income populations have greater risks associated with negative health outcomes.”⁶¹

Yet the EIS concluded in its environmental analysis that “no disproportionately high and adverse impacts on environmental justice populations as a result of air quality impacts, including impacts associated with the proposed Compressor Station [in Buckingham County], would be expected.”⁶² The EIS explained that “[d]ue to construction and compressor station emissions, African American populations near [the project] could experience disproportionate health impacts due to their susceptibility to asthma.”⁶³ But the “[h]ealth impacts from construction dust would be temporary, localized, and minor.”⁶⁴ Meanwhile, “[h]ealth impacts from compressor station emissions would be moderate because, while they would be permanent facilities, air emissions would not exceed regulatory permissible levels.”⁶⁵

In its decision certifying the Atlantic Coast Pipeline, FERC adopted the findings in the EIS and stated: “[T]he final EIS concludes, and we agree, that the projects will not result in disproportionately high and adverse impacts on environmental justice populations as a result of air quality impacts” or “other resources impacts.”⁶⁶

The project was ultimately canceled by the developer several years after it received approval from FERC.⁶⁷

5. *Mountain Valley Pipeline Southgate Project*

The Mountain Valley Pipeline Southgate Project involved an application to build a 75.1-mile pipeline, a compressor station, and other associated facilities in Virginia and North Carolina.⁶⁸ The environmental impact statement for the project concluded that, out of 35 census blocks crossed by the pipeline, 15 contained environmental justice populations.⁶⁹ In particular, the compressor station, known as the Lambert Compressor Station, was designated to be built in Pittsylvania County, within one mile of two environmental justice populations and in close proximity to a third.⁷⁰ Two of those census blocks had minority

⁶⁰ *Id.* at 4-513–4-514.

⁶¹ *Id.* at 4-514.

⁶² *Id.*

⁶³ *Id.*

⁶⁴ *Id.*

⁶⁵ *Id.*

⁶⁶ Atlantic Coast Pipeline, LLC, 161 FERC ¶ 61,042, para. 257 (2017).

⁶⁷ See Sarah Vogelsong, *Dominion cancels Atlantic Coast Pipeline, announces sale of natural gas transmission and storage assets*, VA. MERCURY (July 5, 2020), <https://perma.cc/4KNH-UJMK>; Sarah Vogelsong, *What sank the Atlantic Coast Pipeline? It wasn't just environmentalism.*, VA. MERCURY (July 8, 2020), <https://perma.cc/C6DF-ZWGW>.

⁶⁸ Mountain Valley Pipeline, LLC, 171 FERC ¶ 61,232, 62,632 (2020), *order denying reh'g*, 172 FERC ¶ 62,100 (2020).

⁶⁹ Southgate Project, Final Environmental Impact Statement, Mountain Valley Pipeline, LLC, FERC Docket No. CP19-14, at 4-142 (Feb. 2020).

⁷⁰ *Id.* at 4-142, 4-143, 4-144 tbl. 4.9-7.

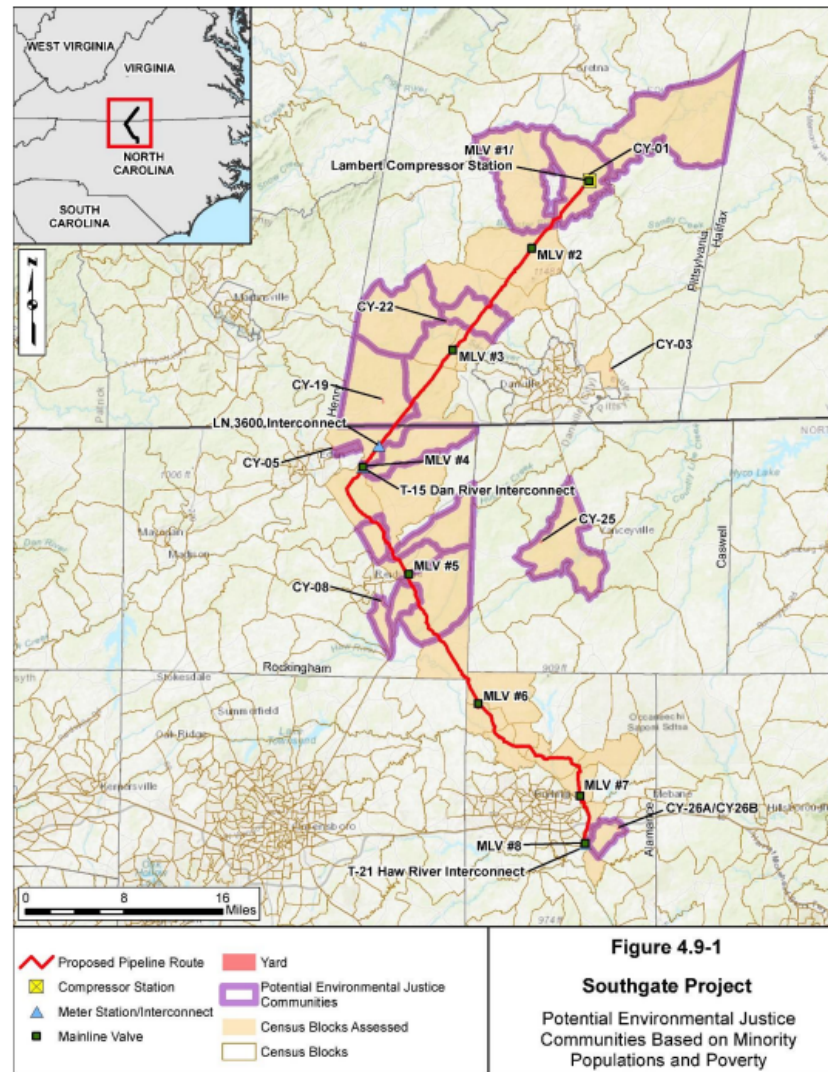
populations above 50% or at least 10% higher than the county average, and one population was designated as a low-income community.⁷¹ The minority populations were primarily African American.⁷²

The environmental impact statement included a map of the proposed project and the relevant environmental justice communities:⁷³

⁷¹ *Id.*

⁷² *Id.*

⁷³ *Id.* at 4-150 fig. 4.9-1.



The environmental impact statement acknowledged that the “construction and operation of the compressor station would result in long-term impacts that would degrade air quality in the area surrounding the Lambert Compressor Station.”⁷⁴ It observed that “[v]ulnerable populations may exist within the study area and disproportionate impacts on these populations could occur.”⁷⁵ The EIS specifically noted that “asthma rates in African American populations tend to be higher than in white populations . . . therefore, due to [the] demographics [of the census blocks surrounding the Lambert Compressor Station], populations vulnerable to asthma may exist in proximity to the compressor station.”⁷⁶

Nonetheless, the EIS concluded that there would “no high and adverse impacts to the local environmental justice communities.”⁷⁷ In its decision certifying the pipeline, FERC agreed with the conclusions in the EIS and found that the project “would not have a disproportionately high and adverse environmental or human health impact on minority or low-income populations.”⁷⁸

⁷⁴ *Id.* at 4-142.

⁷⁵ *Id.* at 4-143.

⁷⁶ *Id.* at 4-143 n.26.

⁷⁷ *Id.* at 4-143.

⁷⁸ Mountain Valley Pipeline, LLC, 171 FERC ¶ 61,232, 62,656 (2020).